

OGGETTO:		<b>Supporto geologico tecnico alla variante al Piano Strutturale – Indagini sismiche in sito propedeutiche alla realizzazione della carta delle microzone omogenee in prospettiva sismica (MOPS).</b>
TIPOLOGIA:	<b>INDAGINI IN SISMICA A RIFRAZIONE</b>	DATA INDAGINE: <b>Dicembre 2012 Febbraio 2013</b>
LOCALITA':		<b>COMUNE DI LASTRA A SIGNA (FI)</b>
COMMITTENTE:		<b>AMMINISTRAZIONE COMUNALE DI LASTRA A SIGNA</b>

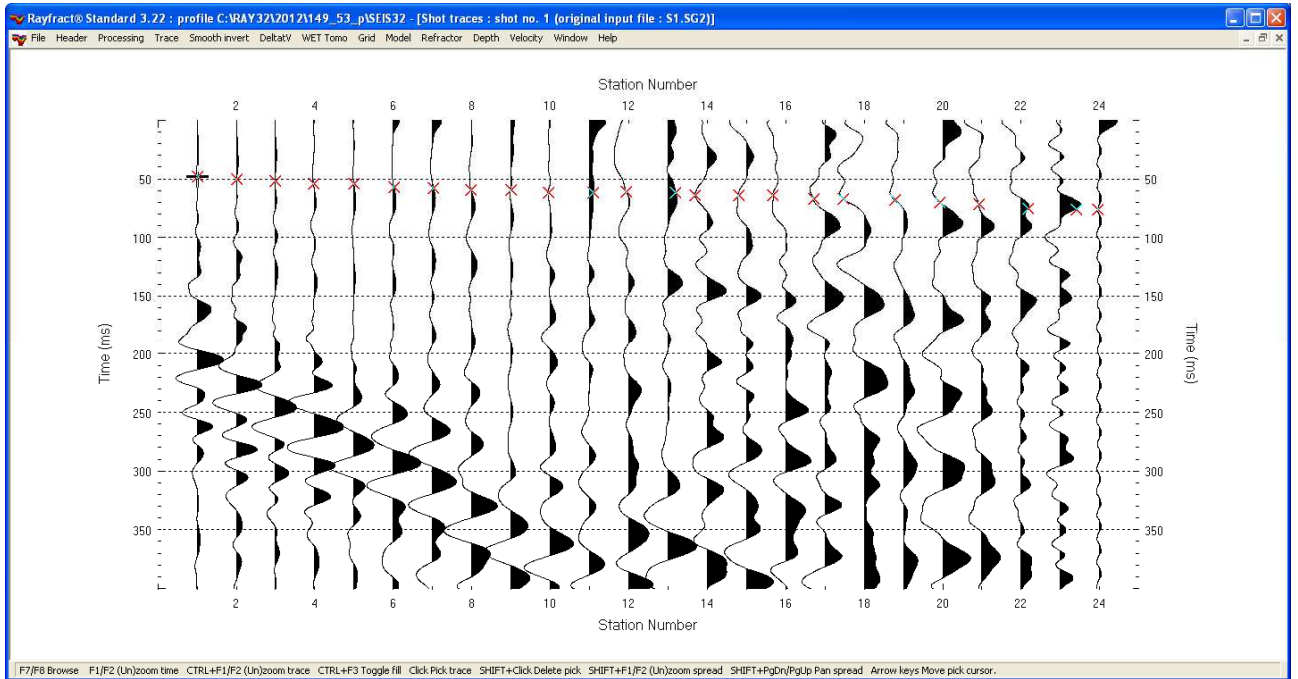
codice documento:	<b>j12.149_las_Allegato 1B.doc</b>
versione /revisione:	<b>01</b>
stato documento:	<b>definitivo</b>
autore:	<b>a.benvenuti</b>
revisione:	<b>v.carnicelli</b>
approvazione:	<b>v.carnicelli</b>

## Allegato 1B

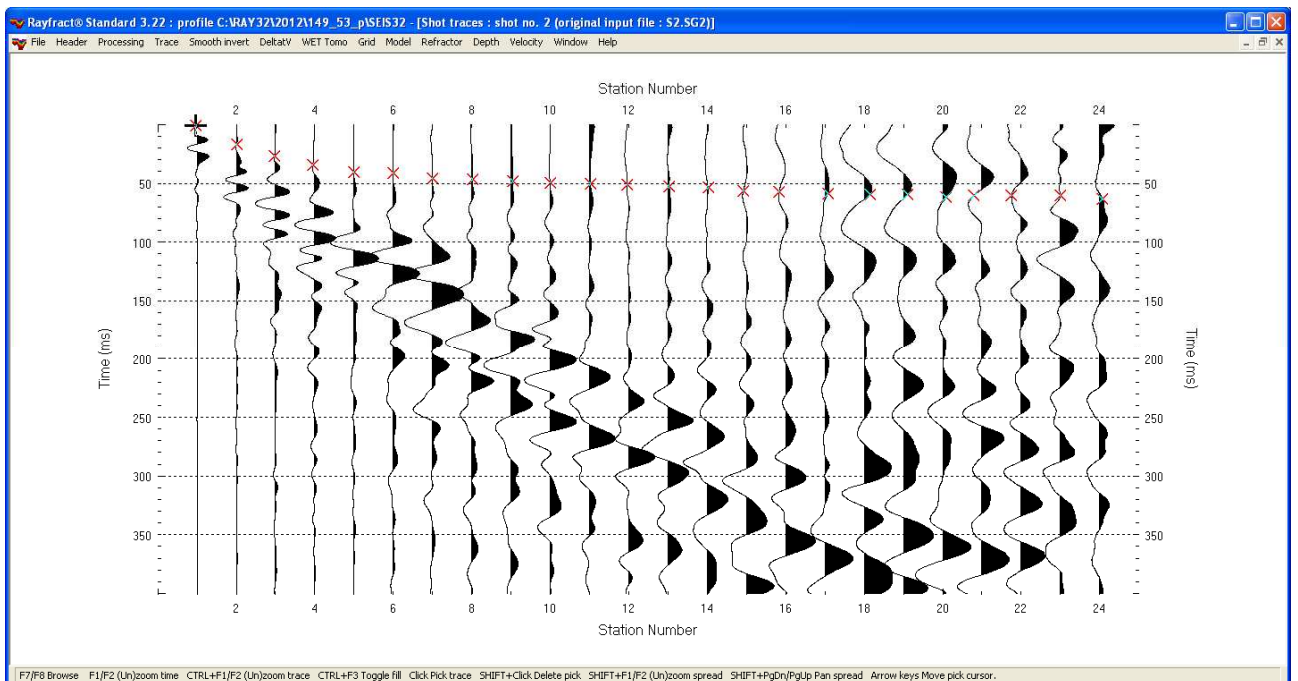
### Indagini in sismica a rifrazione

#### - Sismogrammi -

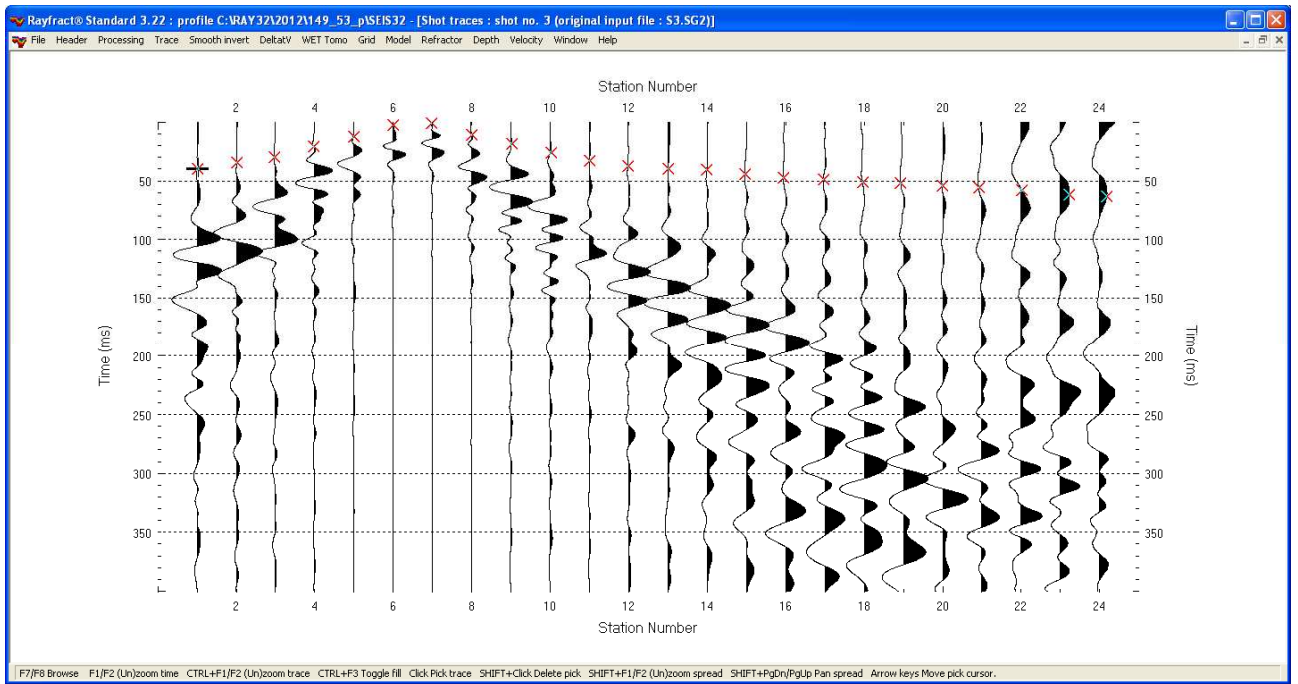
## Sismica a rifrazione in onde P - Sez.53\_sr Sismogrammi



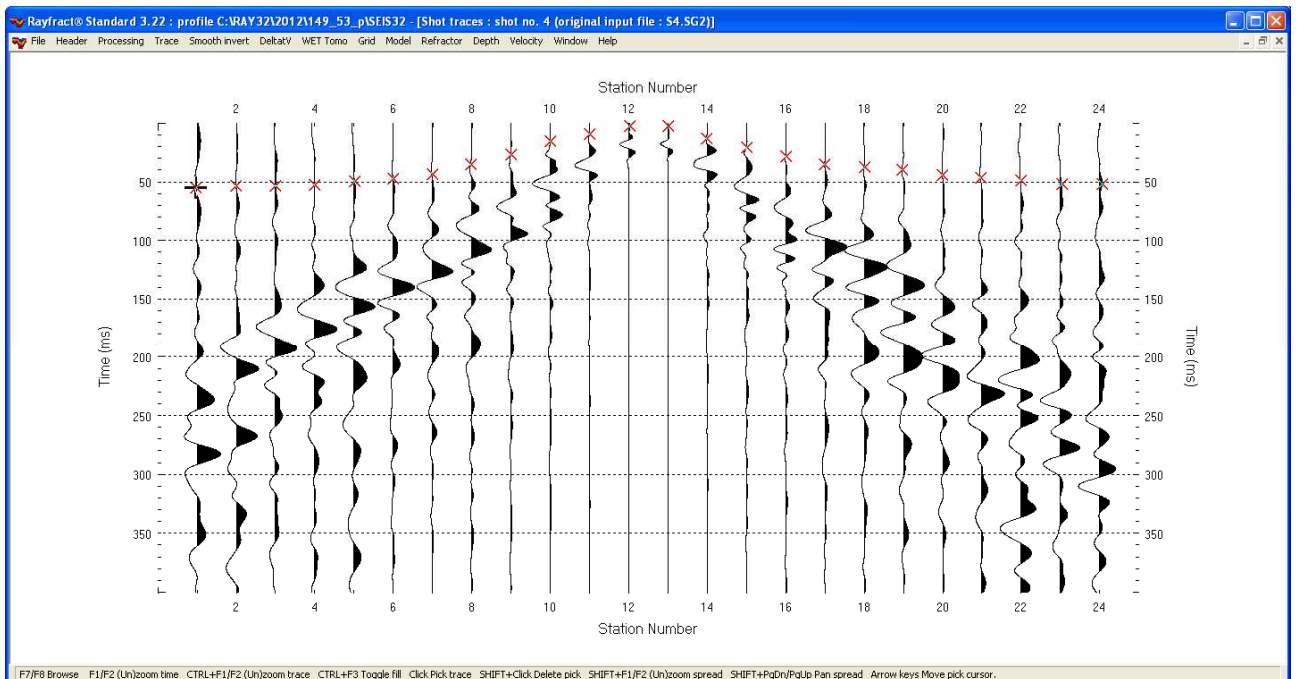
Sez.53\_sr: shot 1



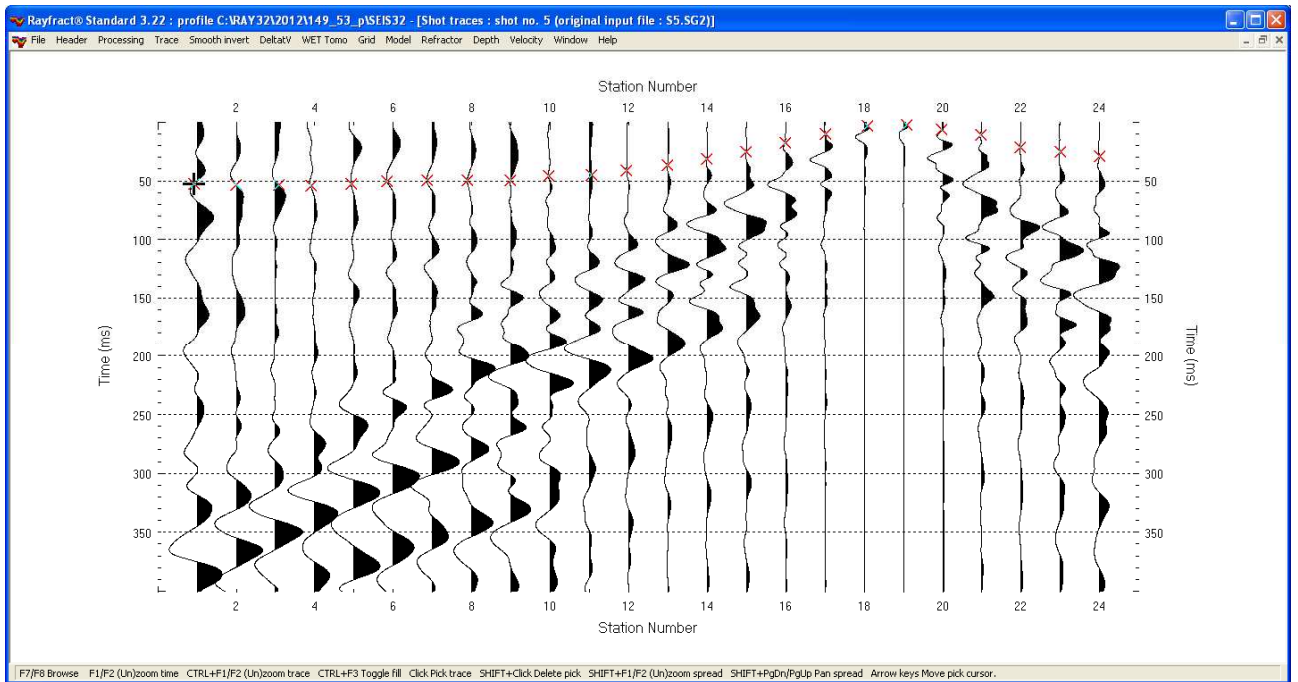
Sez.53\_sr: shot 2



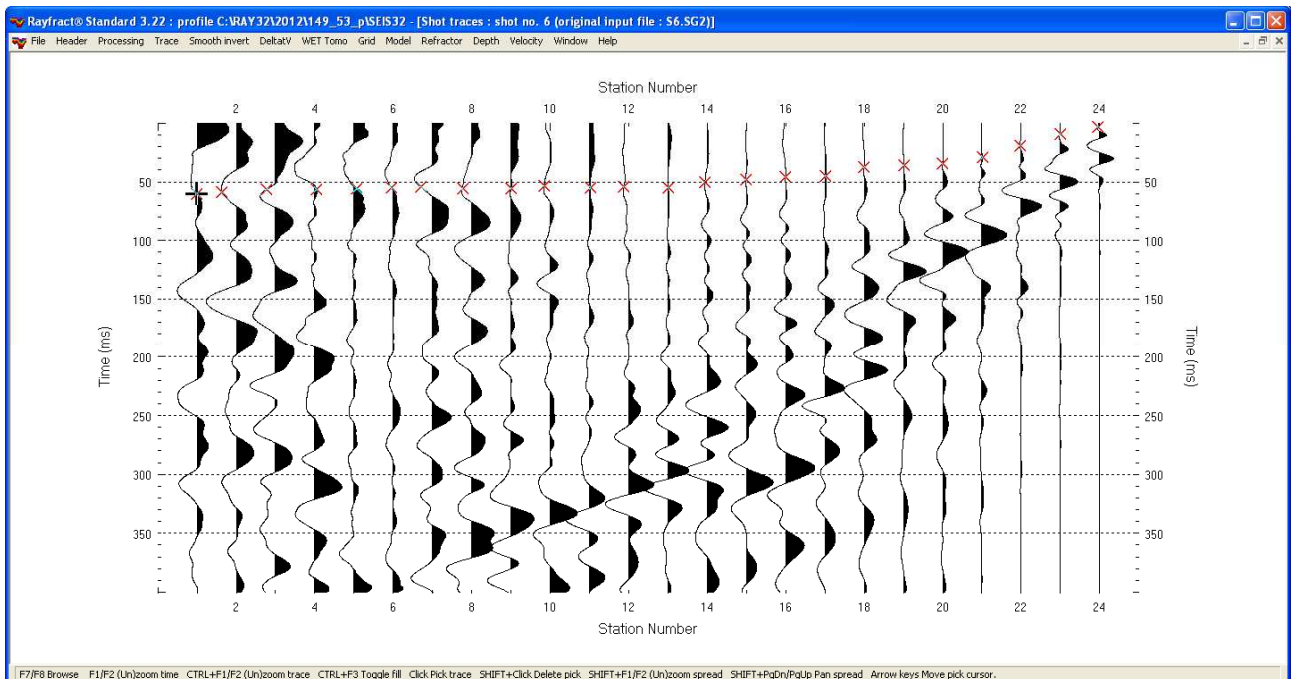
Sez.53\_sr: shot 3



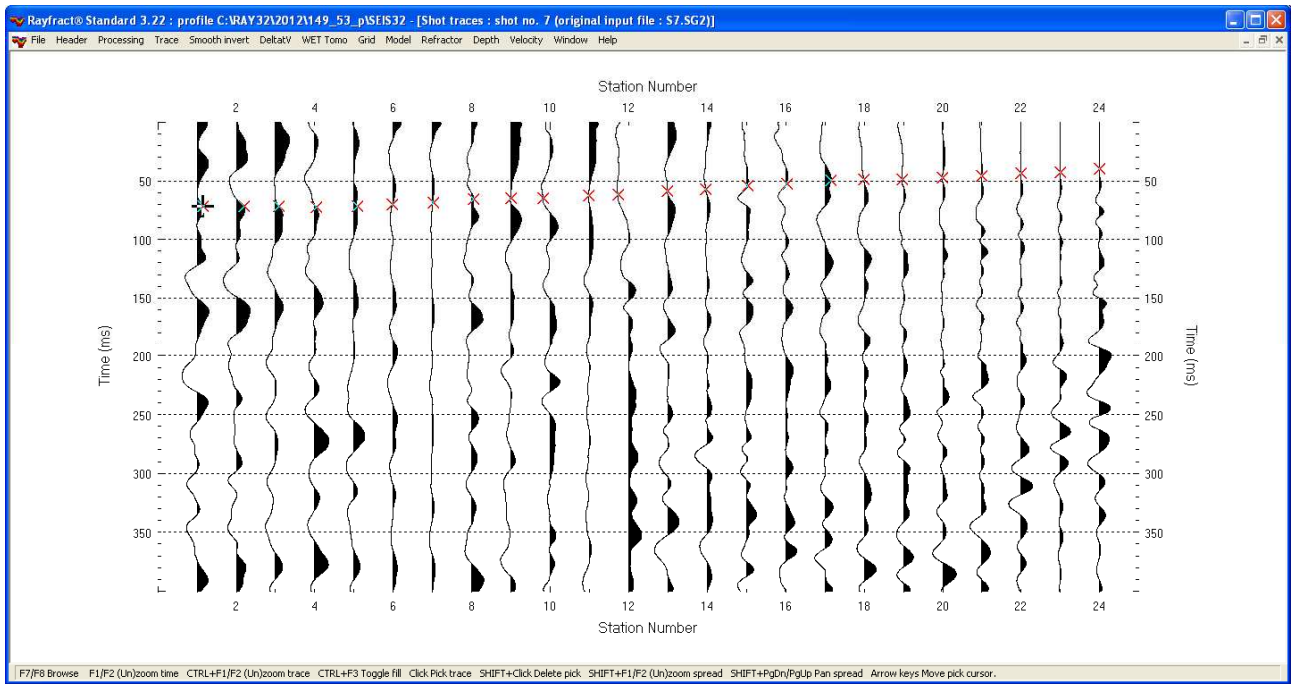
Sez.53\_sr: shot 4



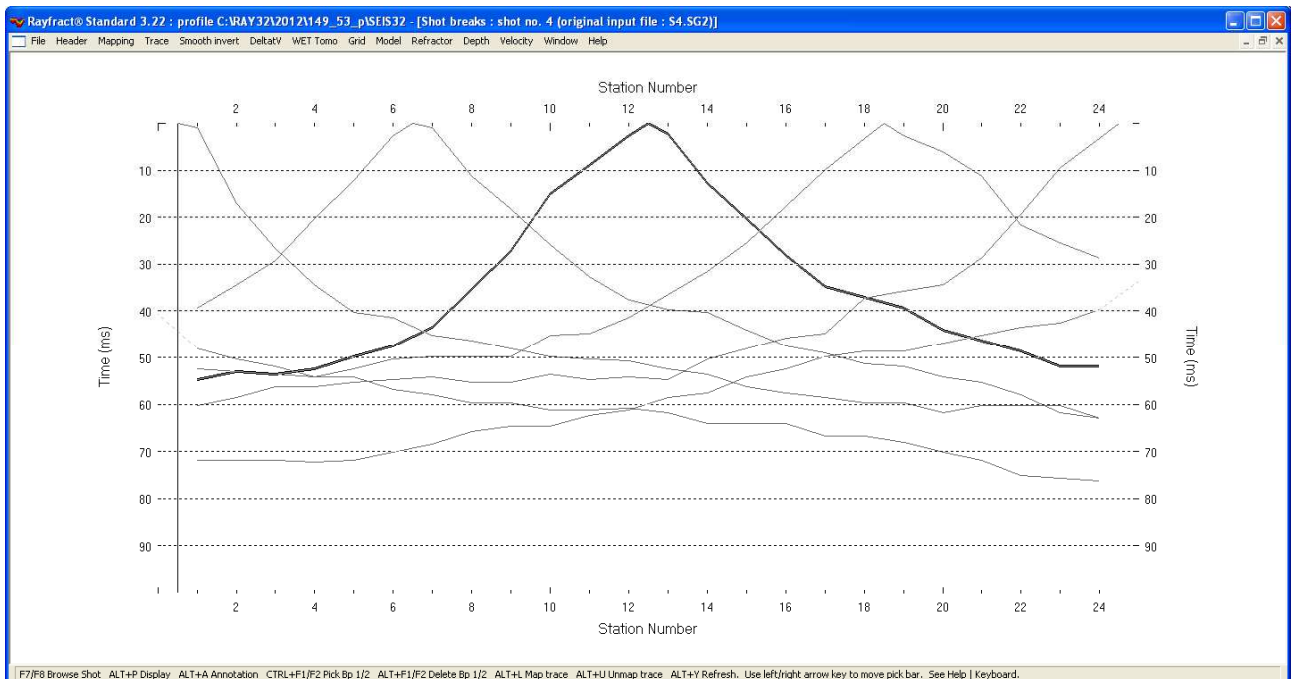
Sez.53\_sr: shot 5



Sez.53\_sr: shot 6

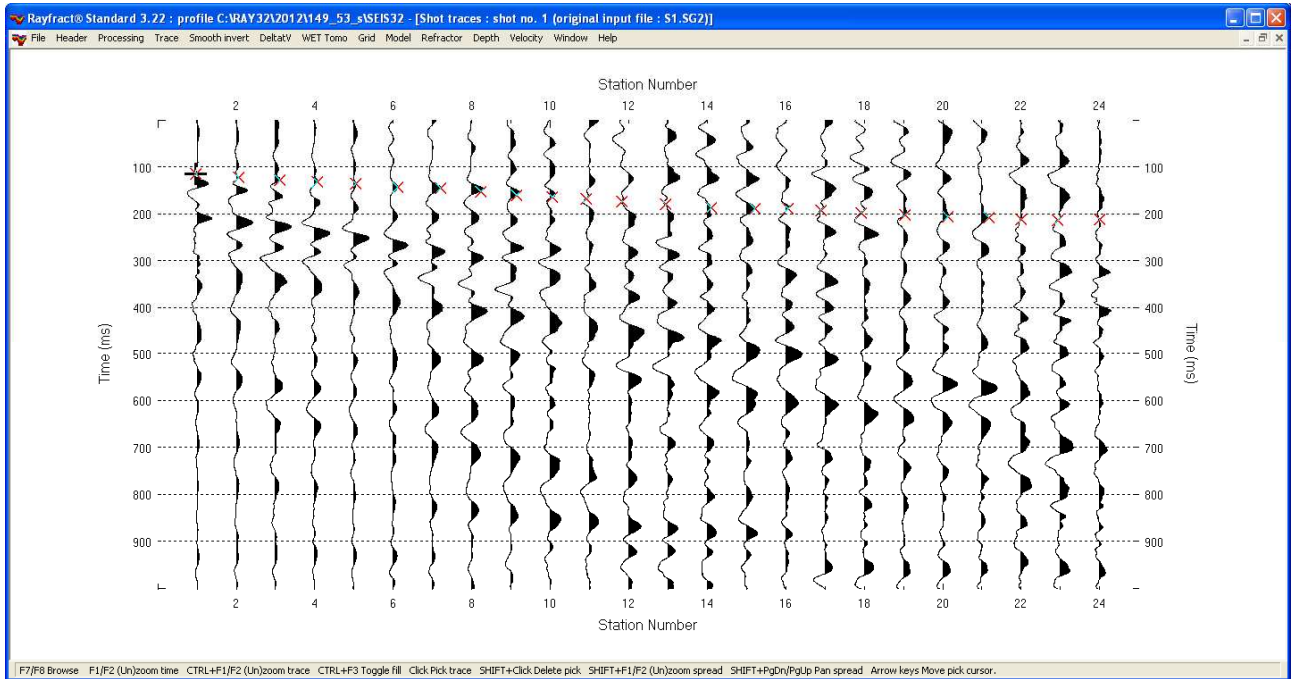


Sez.53\_sr: shot 7

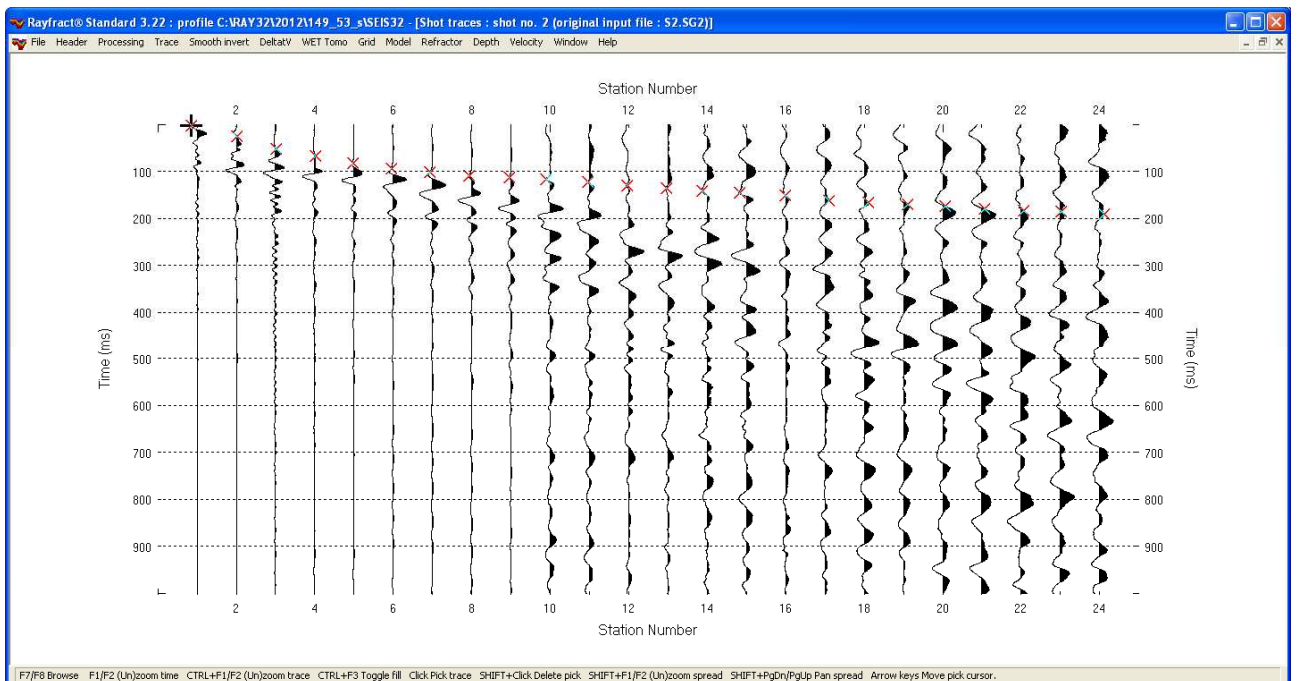


Sez.53\_sr: dromocrone

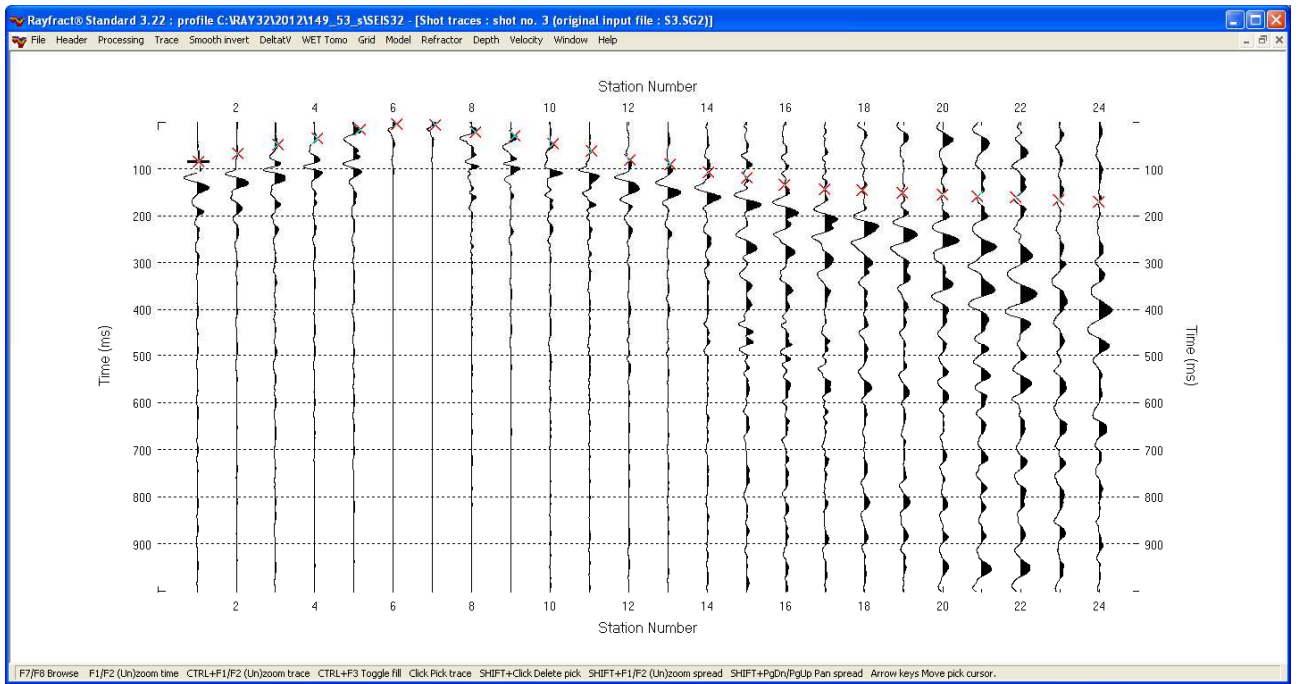
## Sismica a rifrazione in onde Sh - Sez.53\_sr Sismogrammi



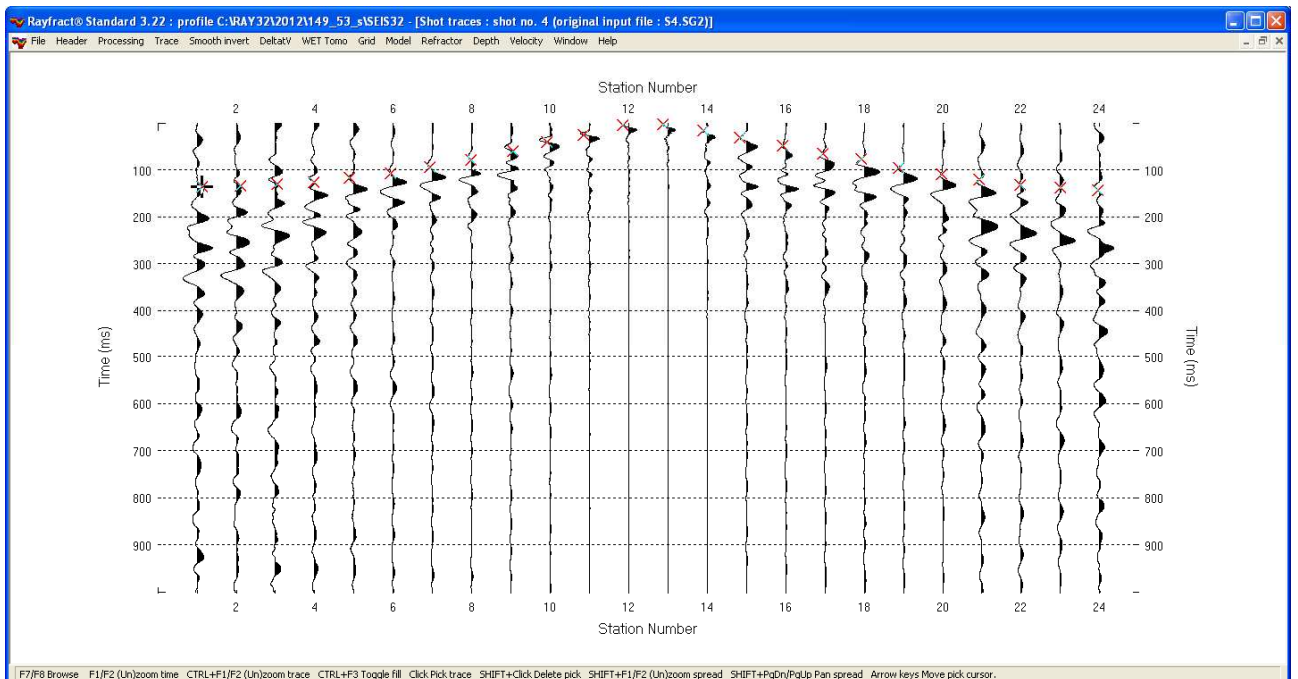
Sez.53\_sr: shot 1



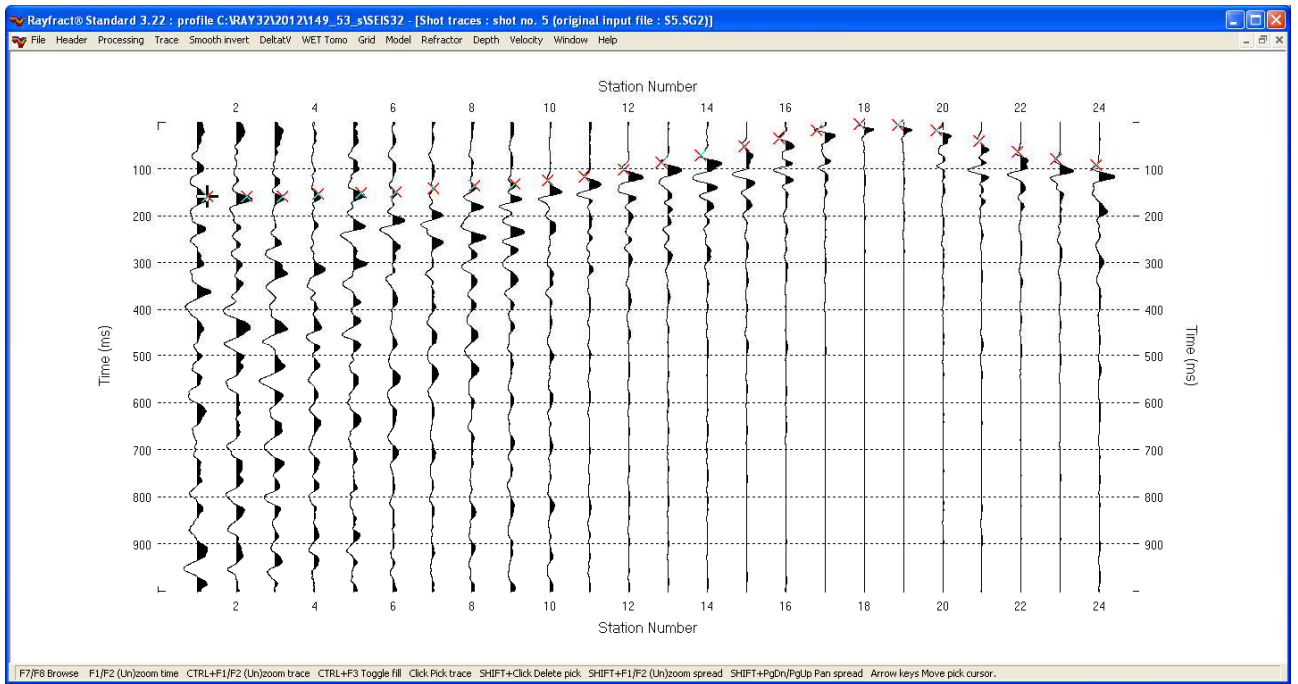
Sez.53\_sr: shot 2



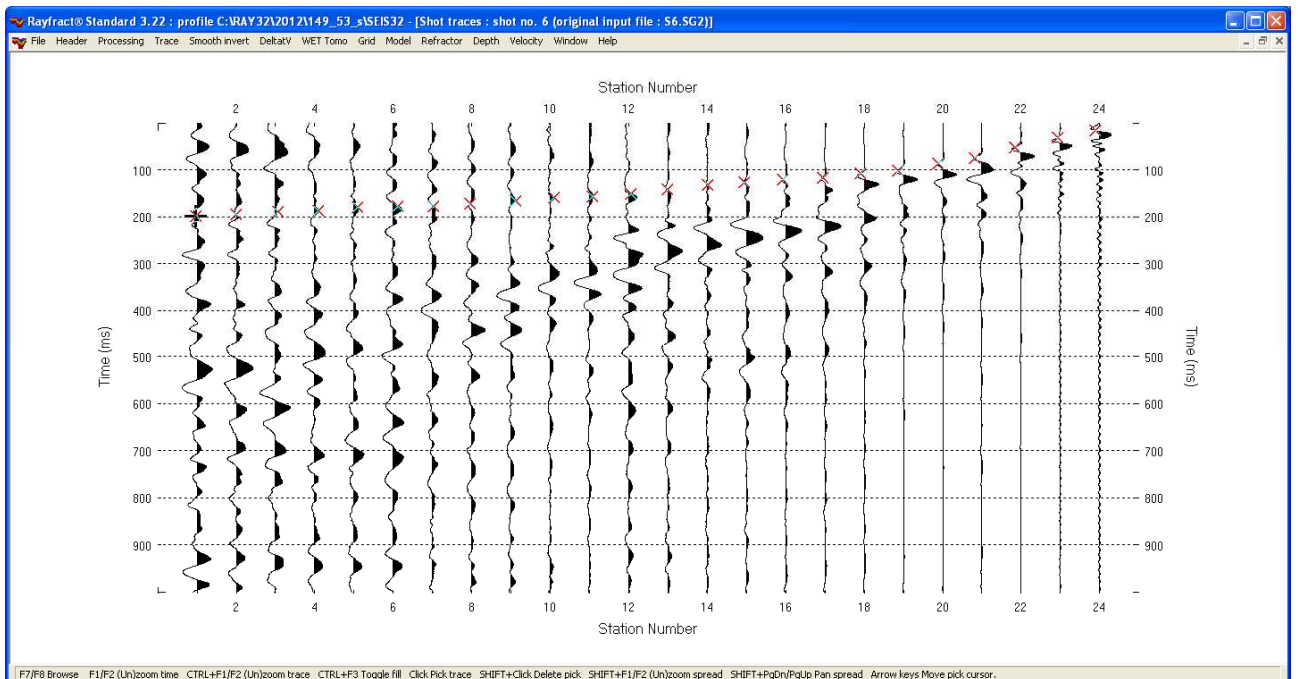
Sez.53\_sr: shot 3



Sez.53\_sr: shot 4

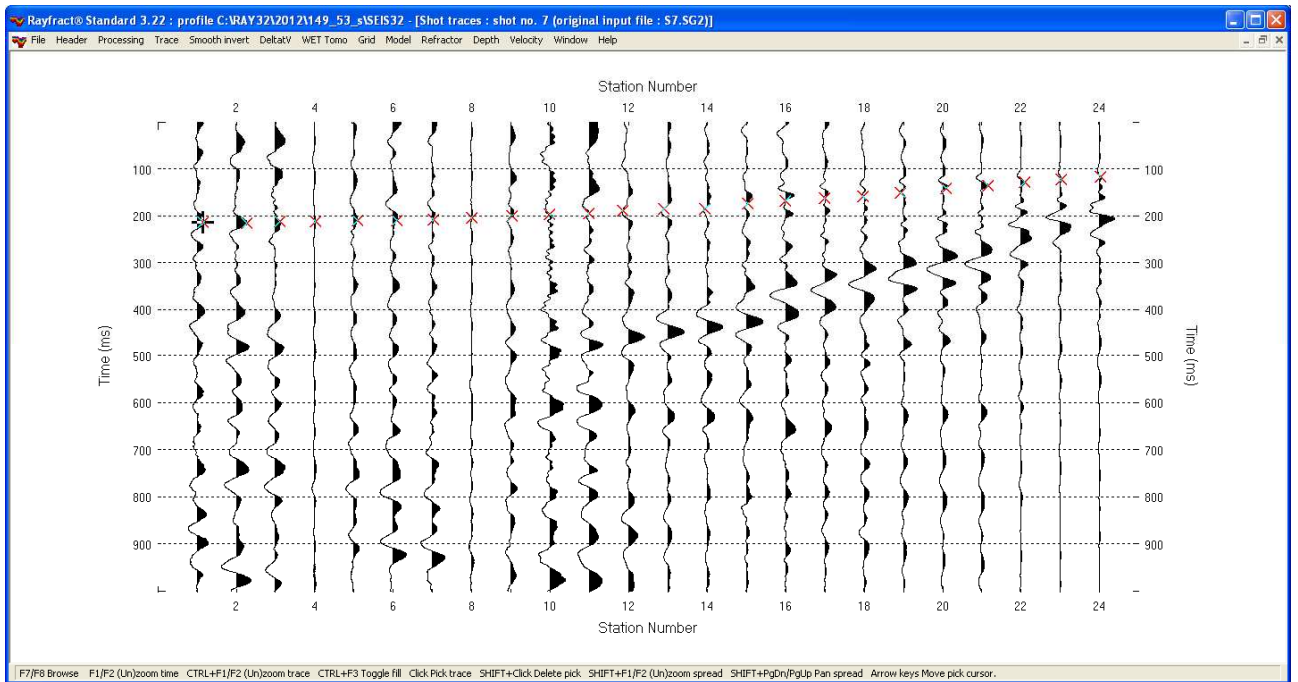


Sez.53\_sr: shot 5

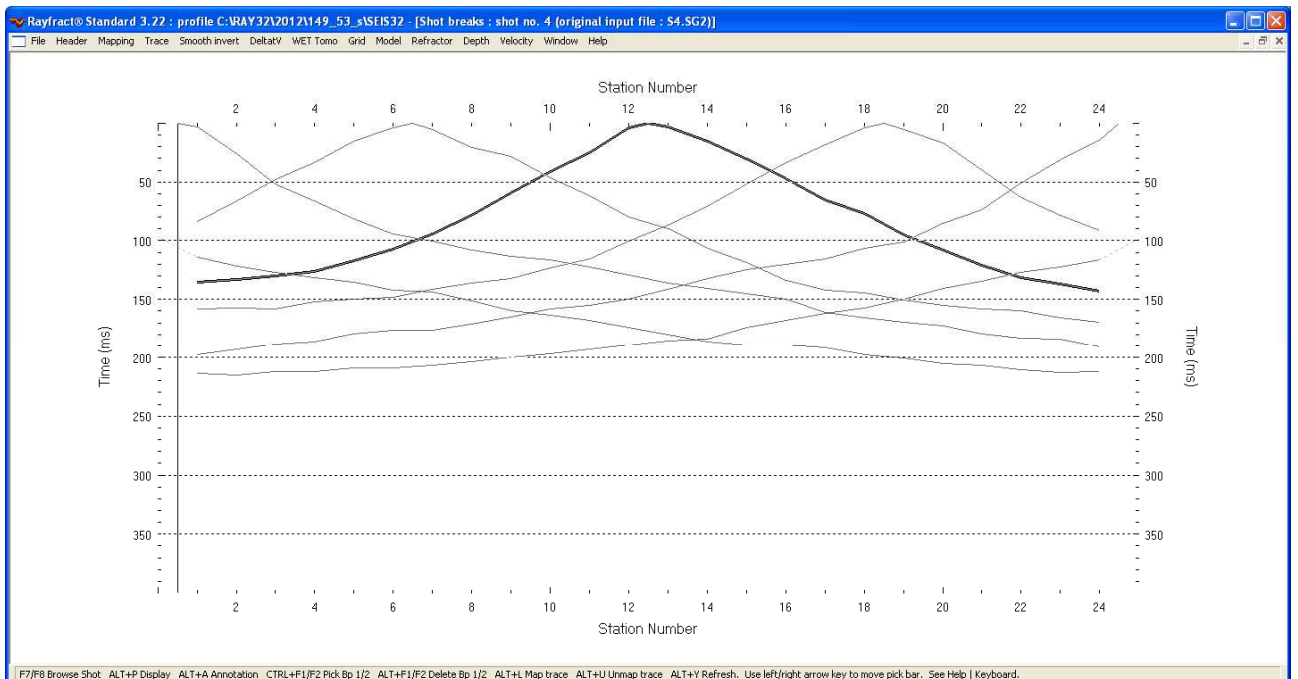


Sez.53\_sr: shot 6



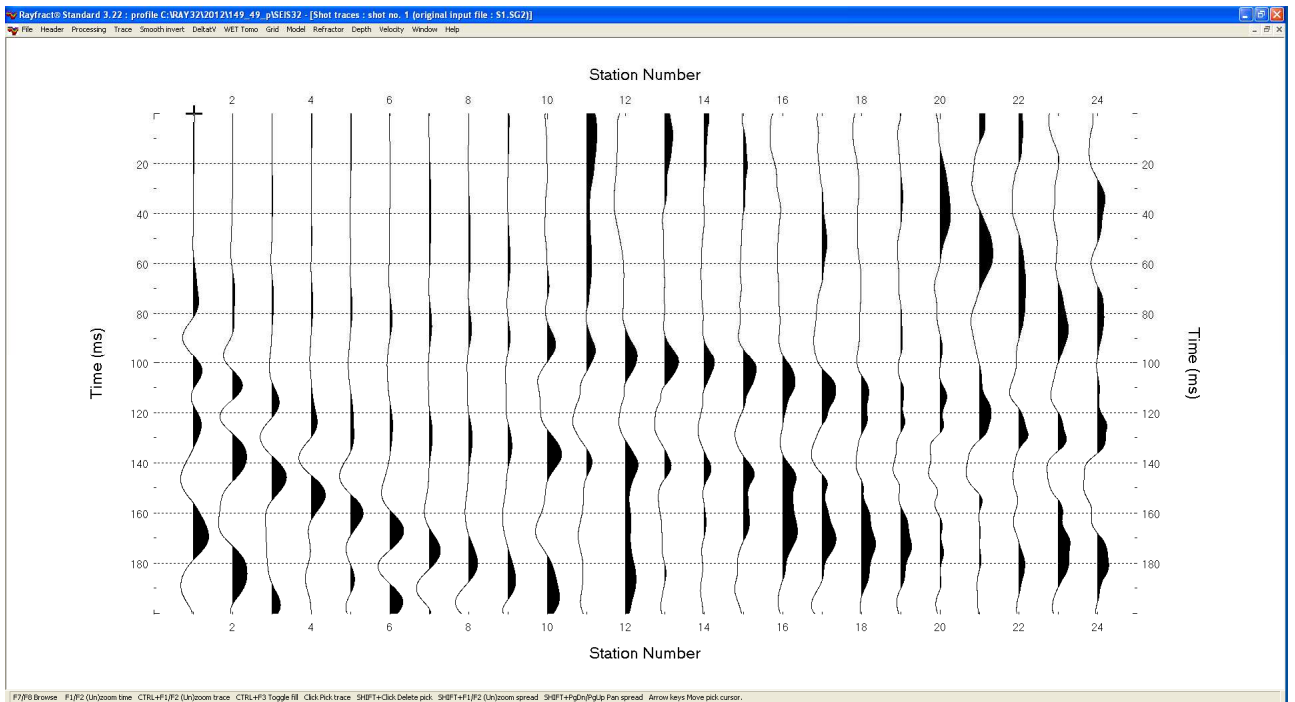


**Sez.53\_sr: shot 7**

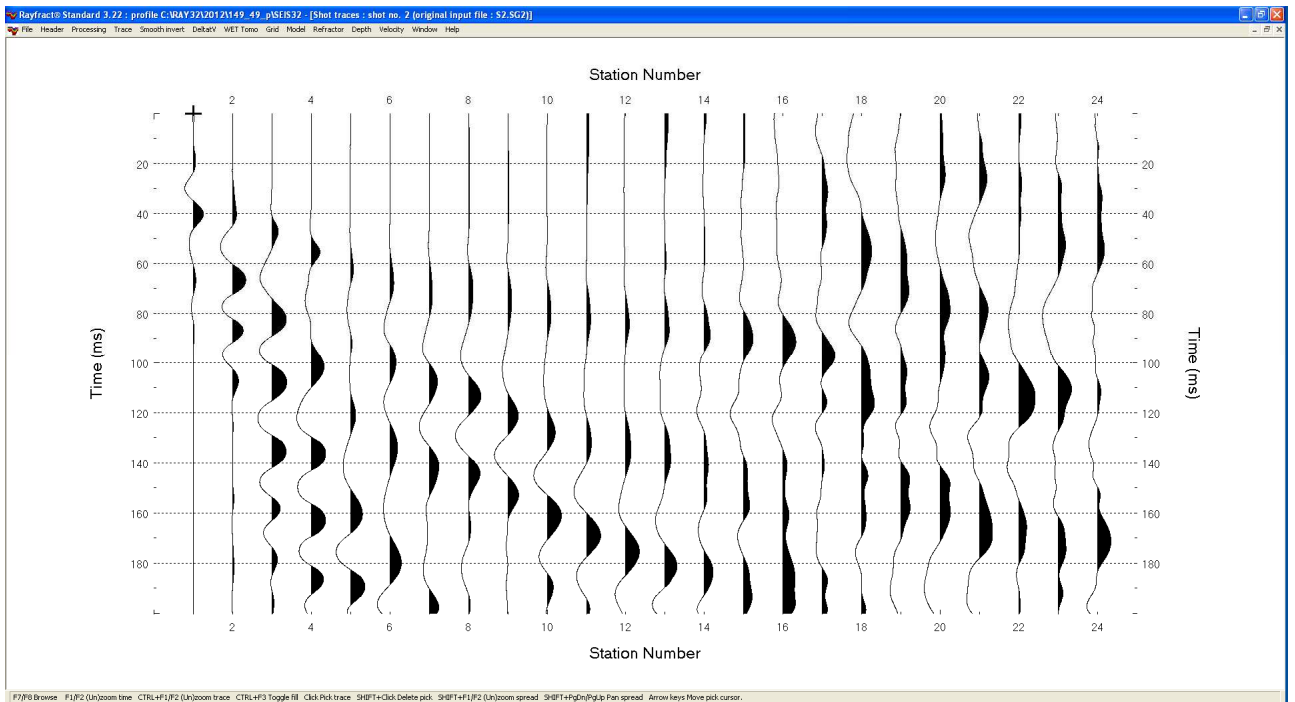


**Sez.53\_sr: dromocrone**

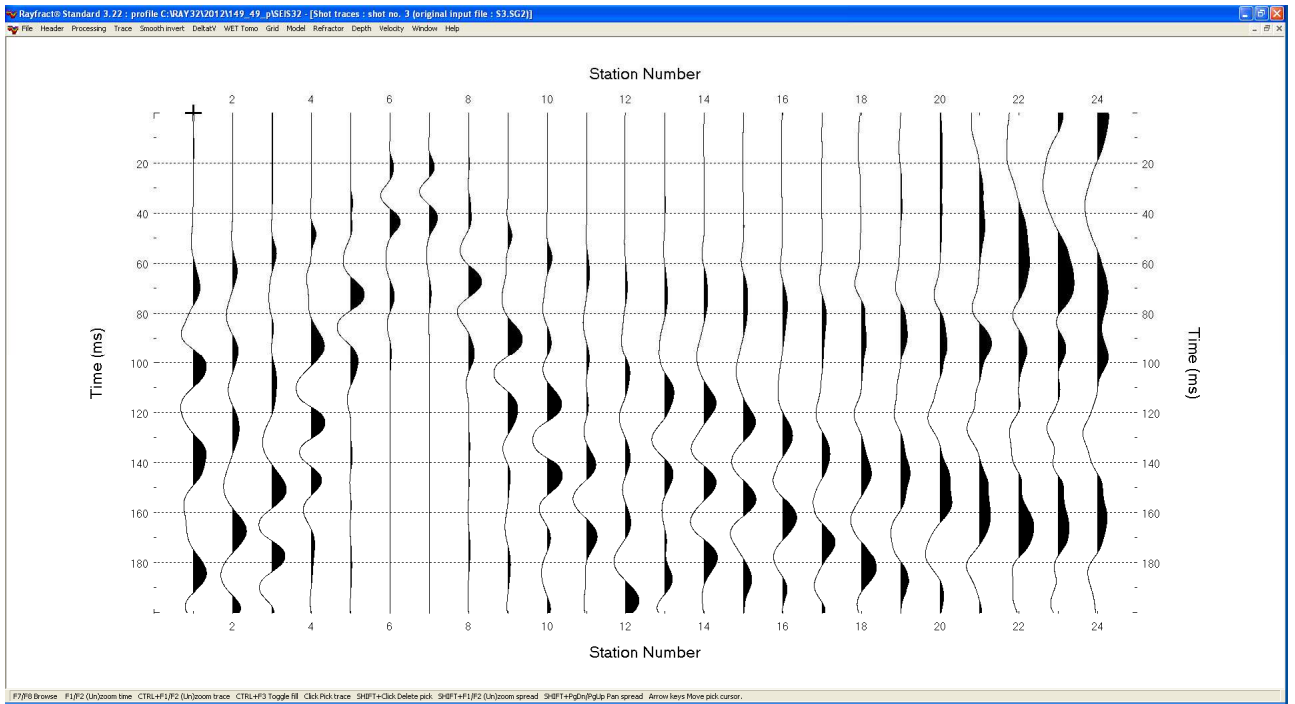
## Sismica a rifrazione in onde P - Sez.49\_sr Sismogrammi



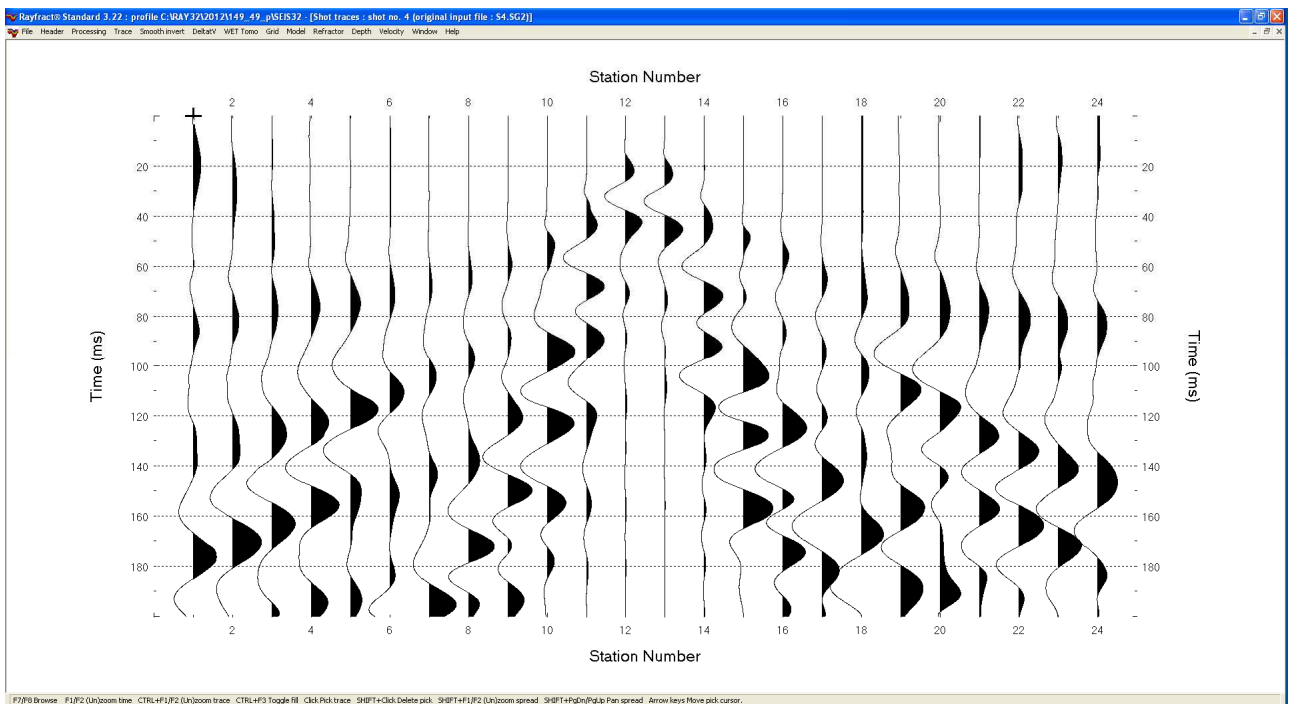
**Sez.49\_sr: shot 1**



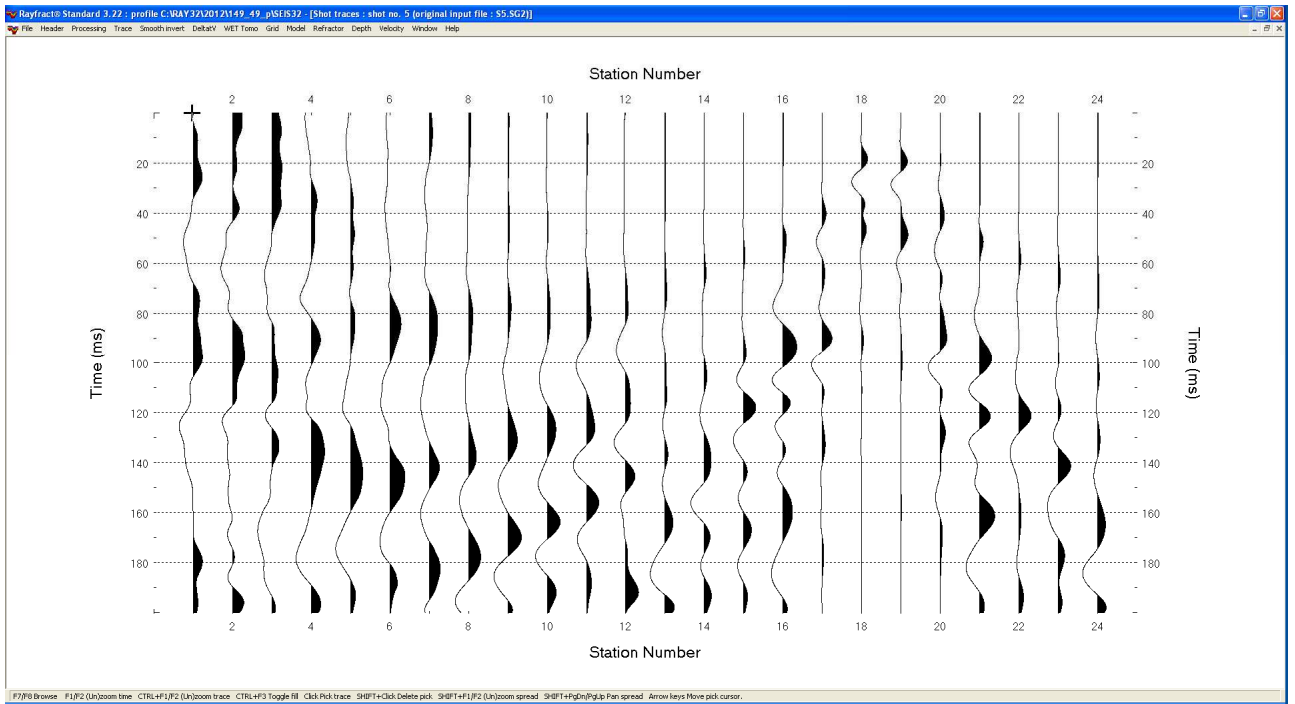
**Sez.49\_sr: shot 2**



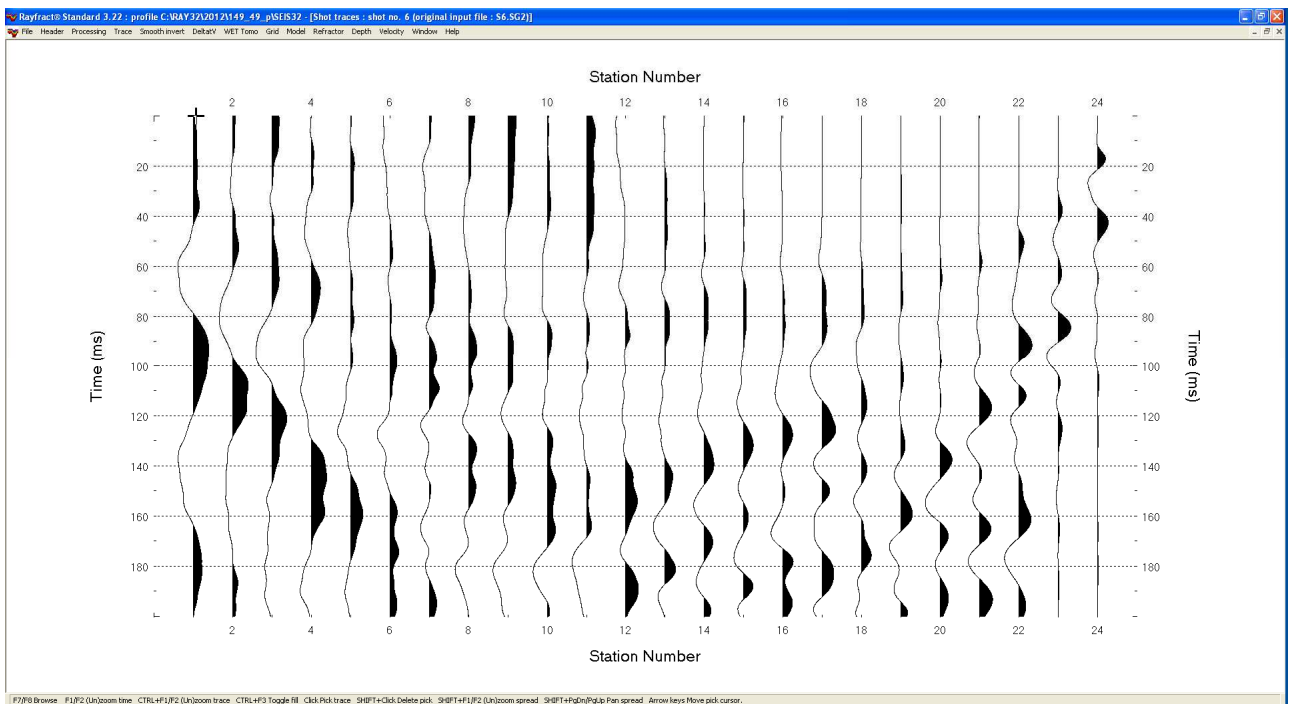
Sez.49\_sr: shot 3



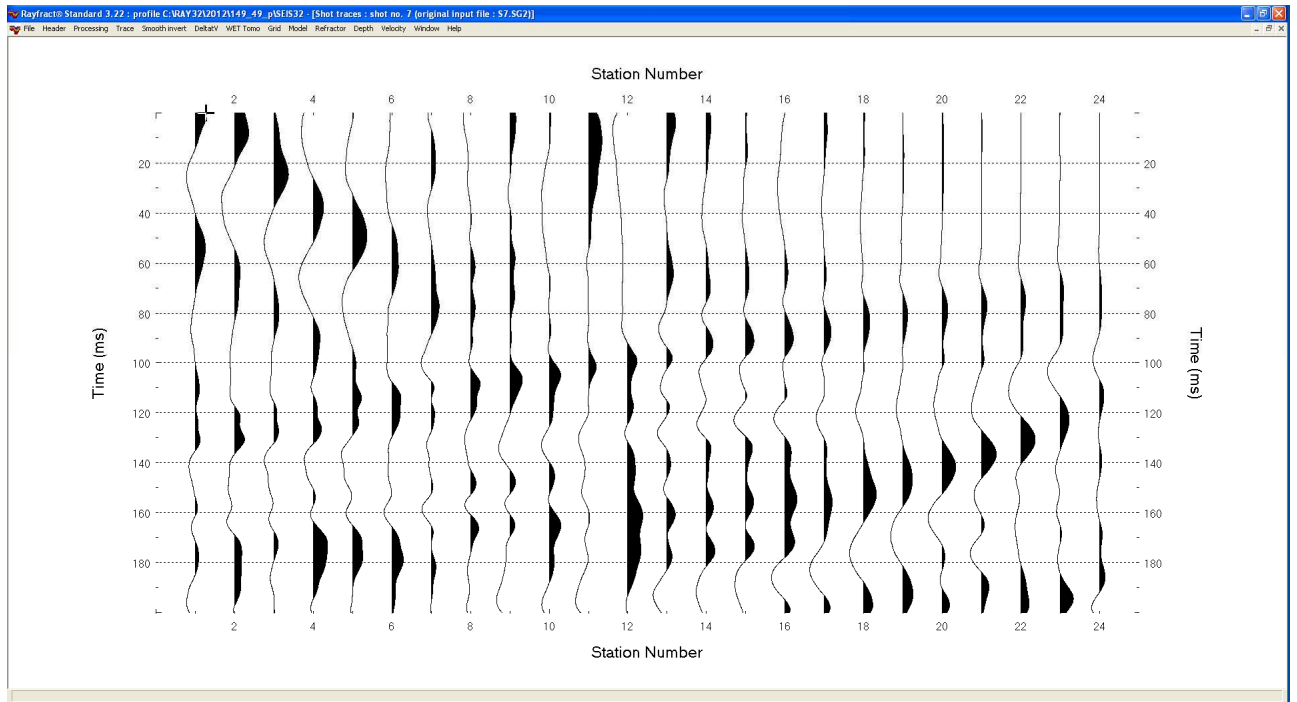
Sez.49\_sr: shot 4



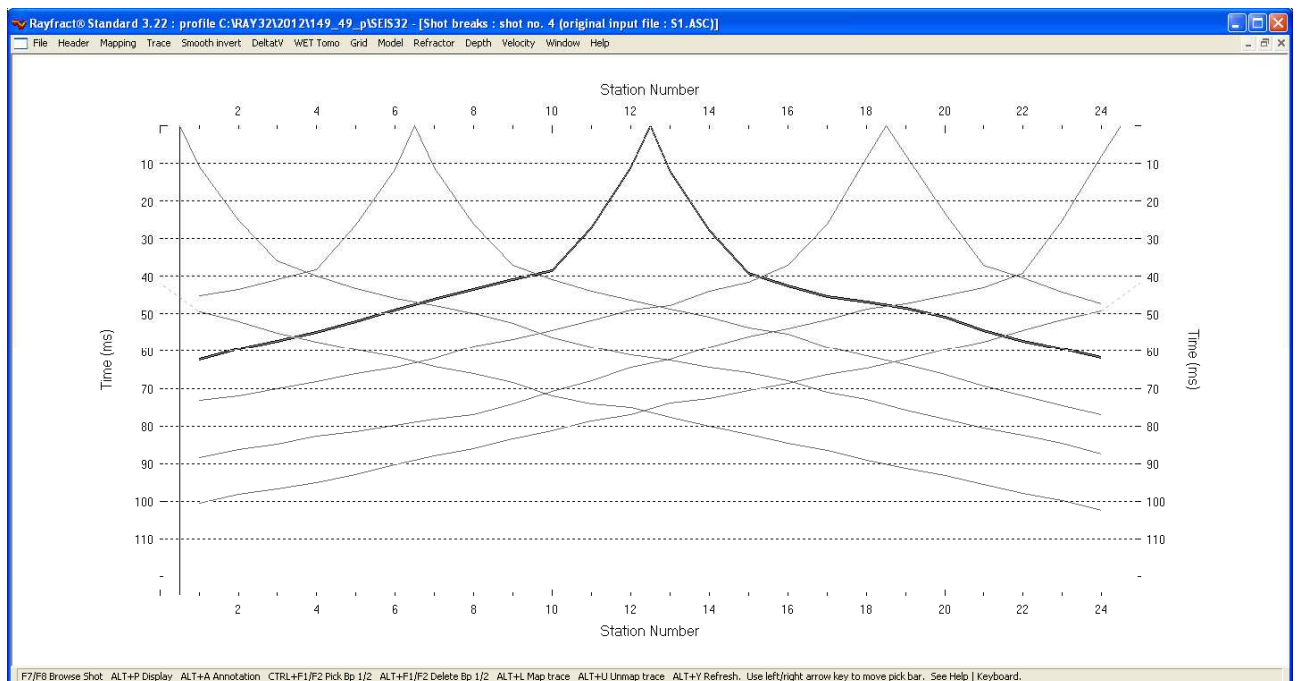
Sez.49\_sr: shot 5



Sez.49\_sr: shot 6

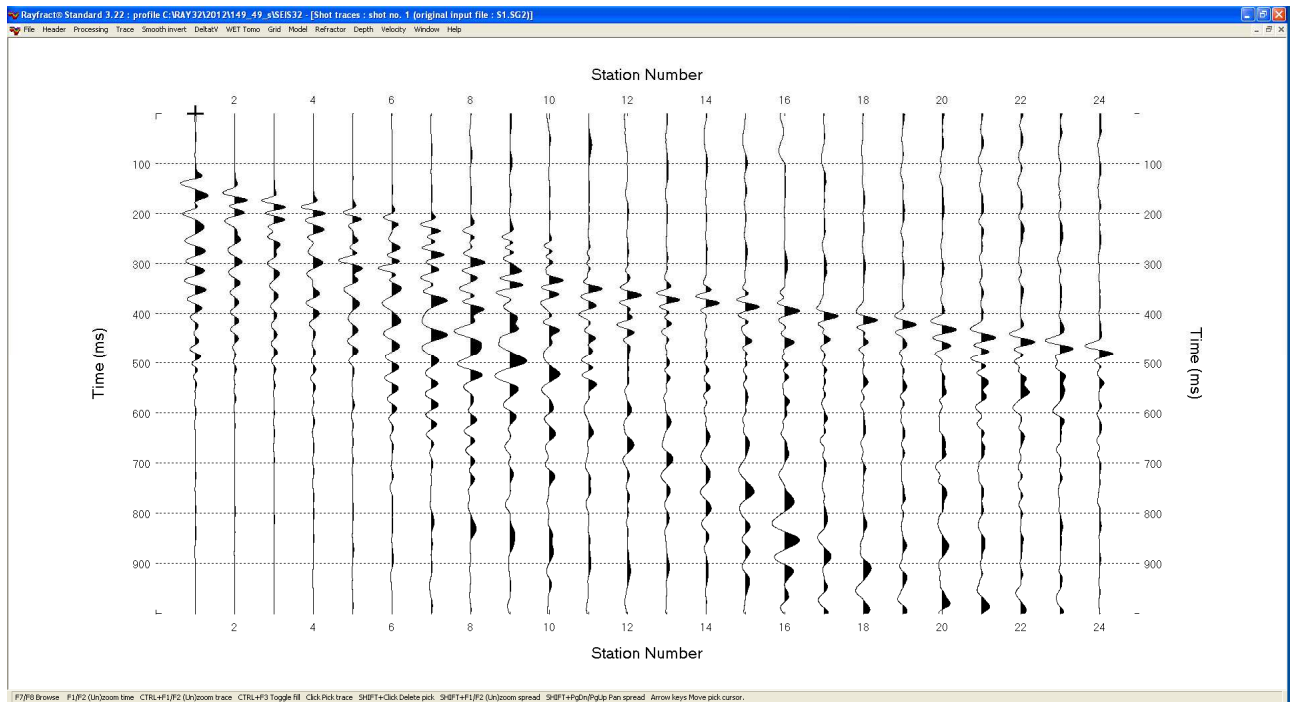


**Sez.49\_sr: shot 7**

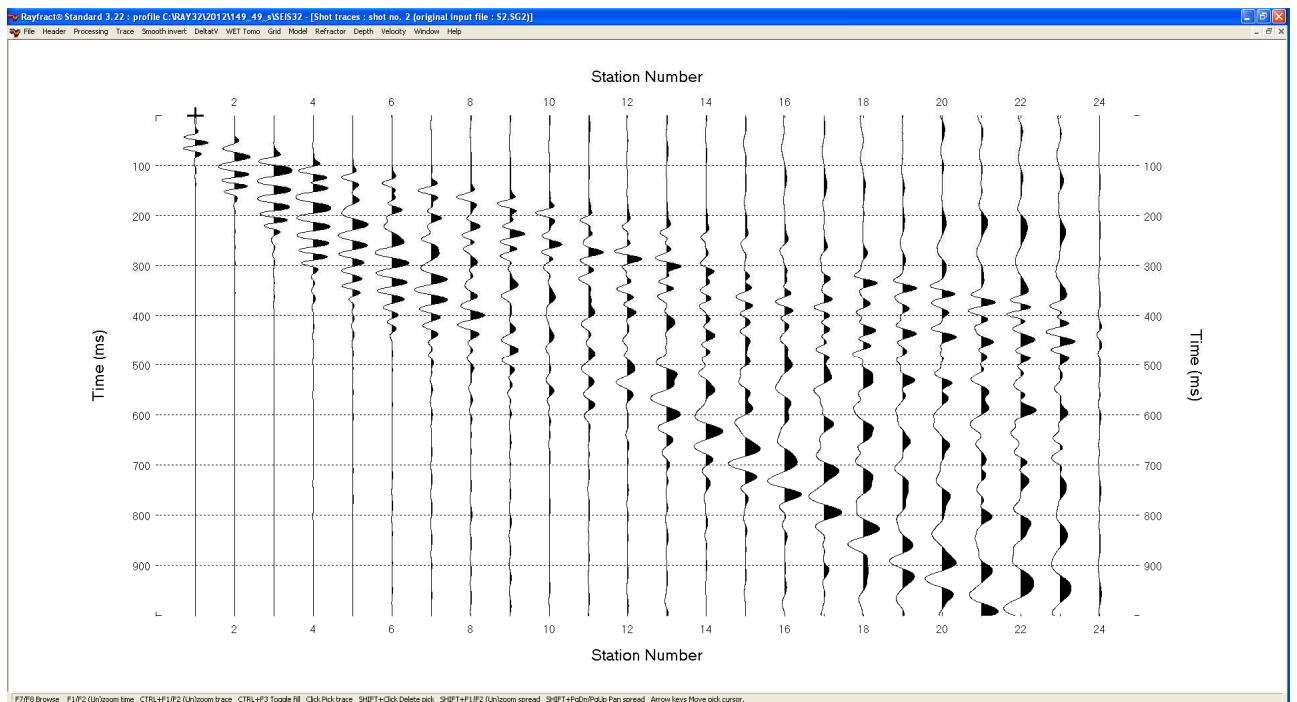


**Sez.49\_sr: dromocrone**

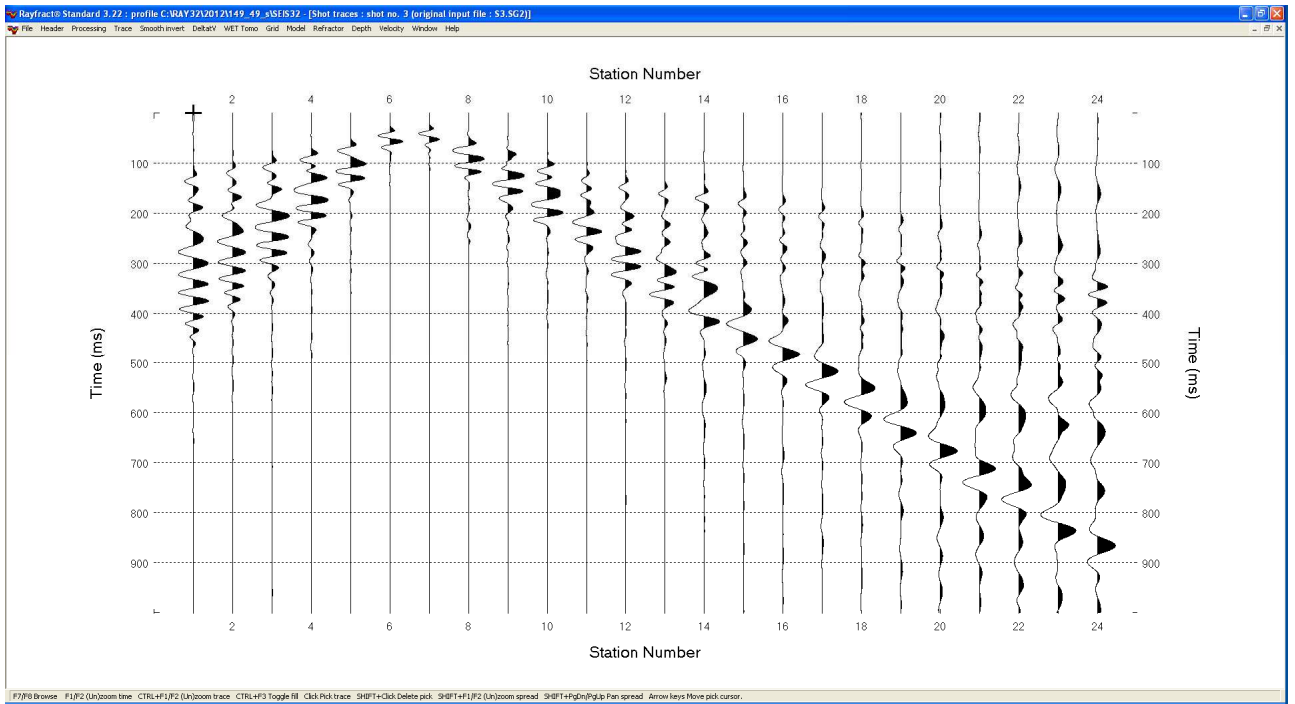
## Sismica a rifrazione in onde Sh - Sez.49\_sr Sismogrammi



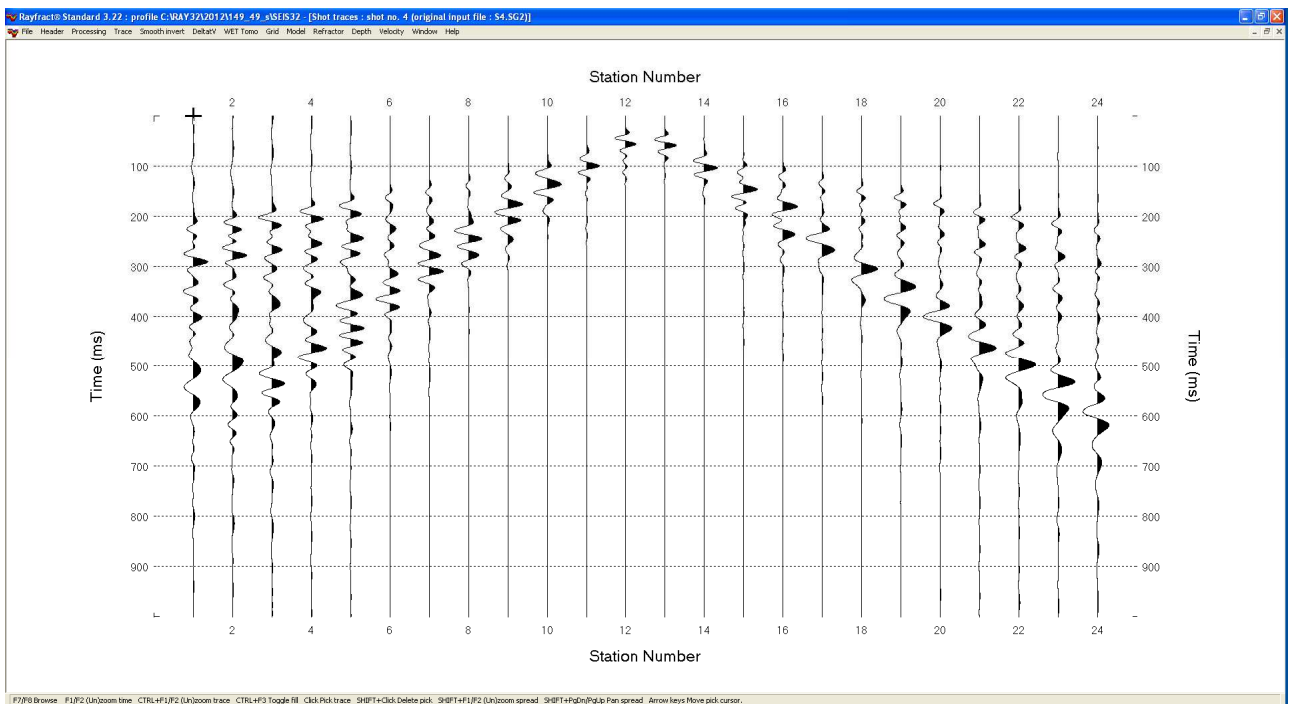
**Sez.49\_sr: shot 1**



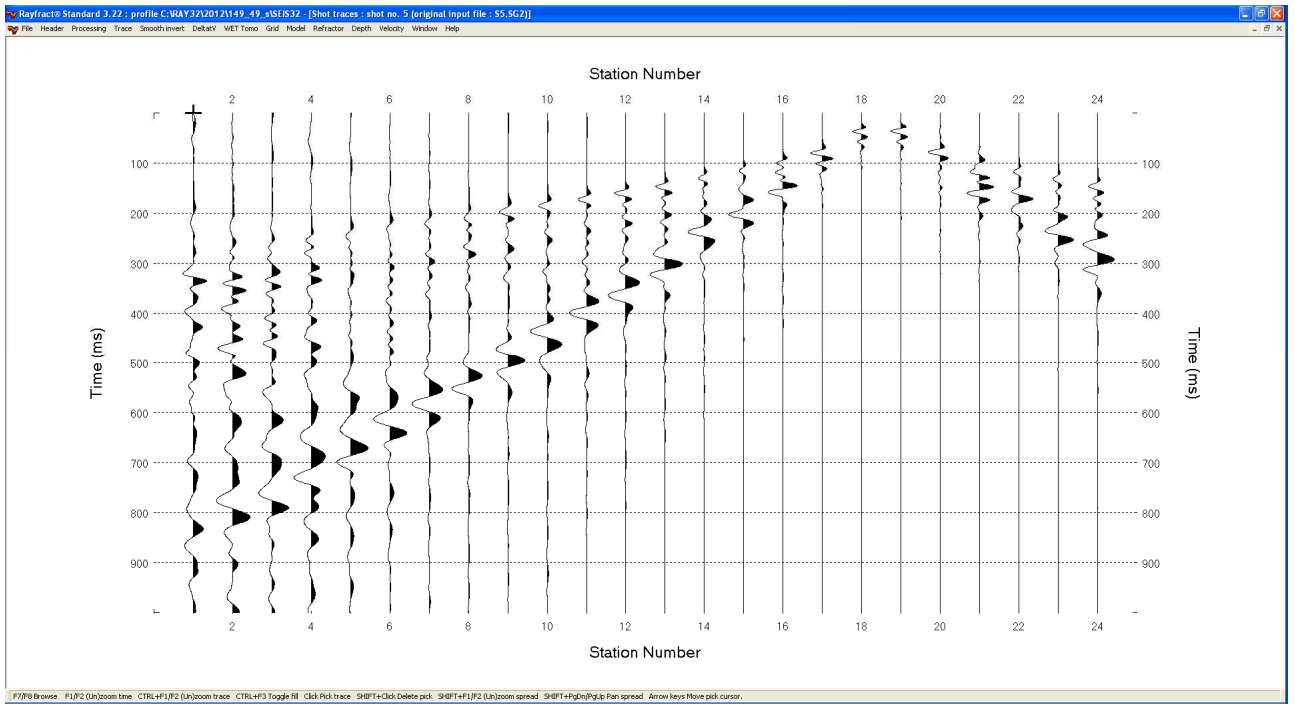
**Sez.49\_sr: shot 2**



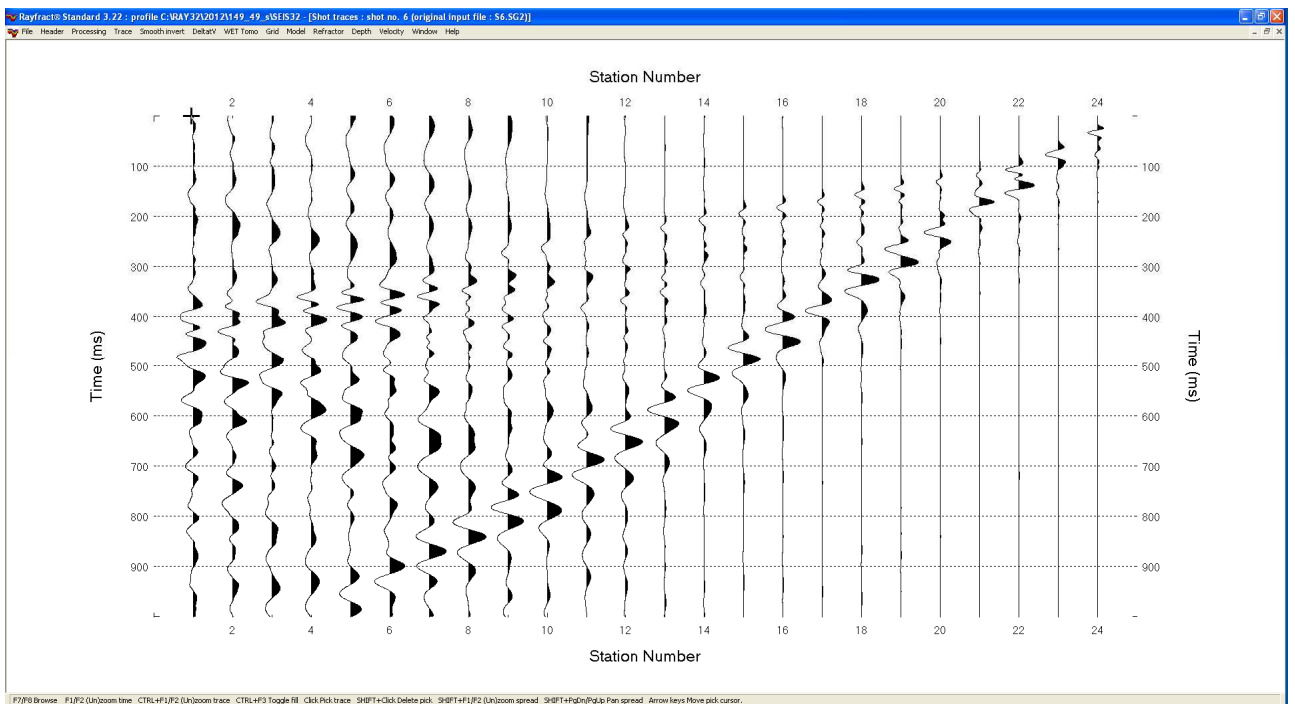
Sez.49\_sr: shot 3



Sez.49\_sr: shot 4

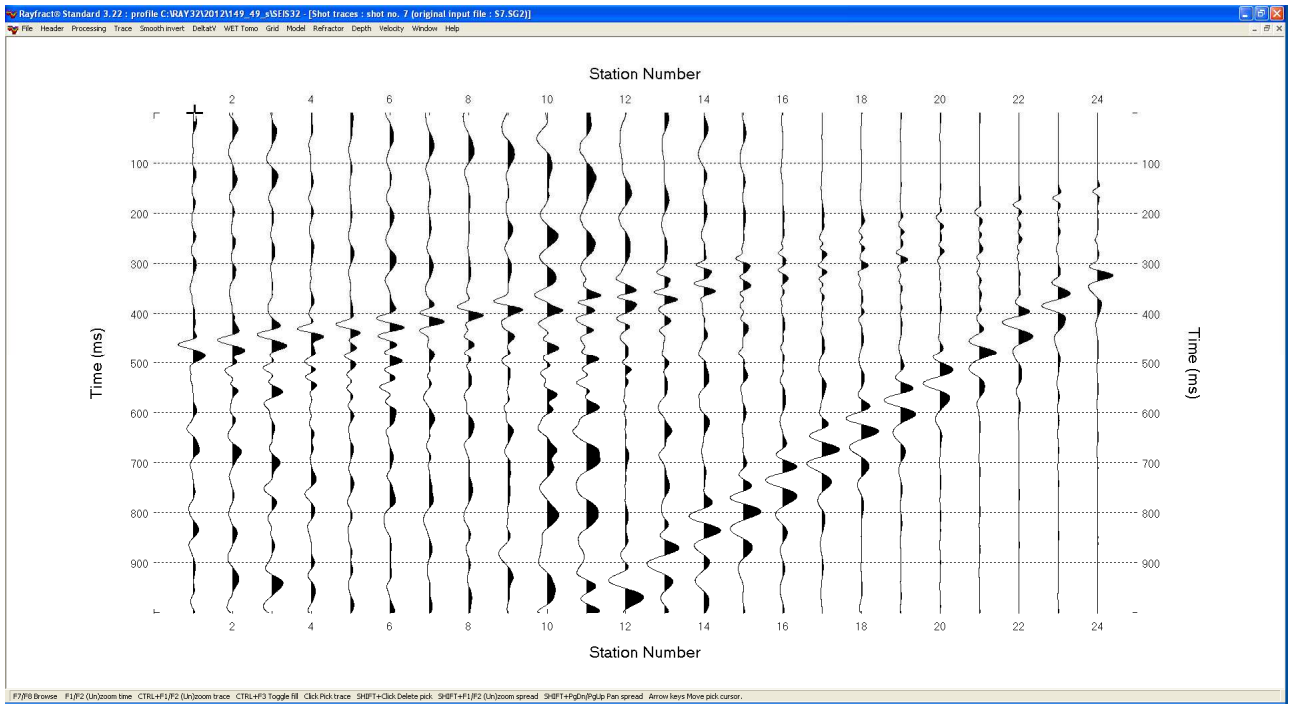


Sez.49\_sr: shot 5

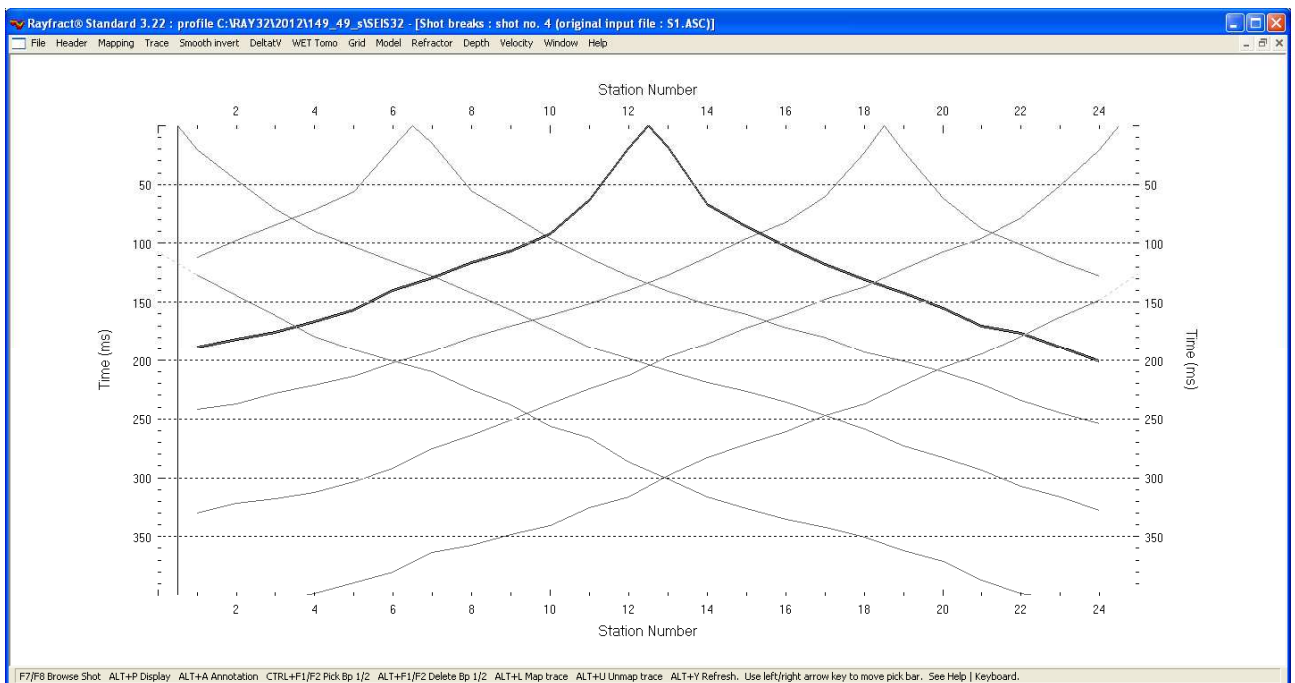


Sez.49\_sr: shot 6



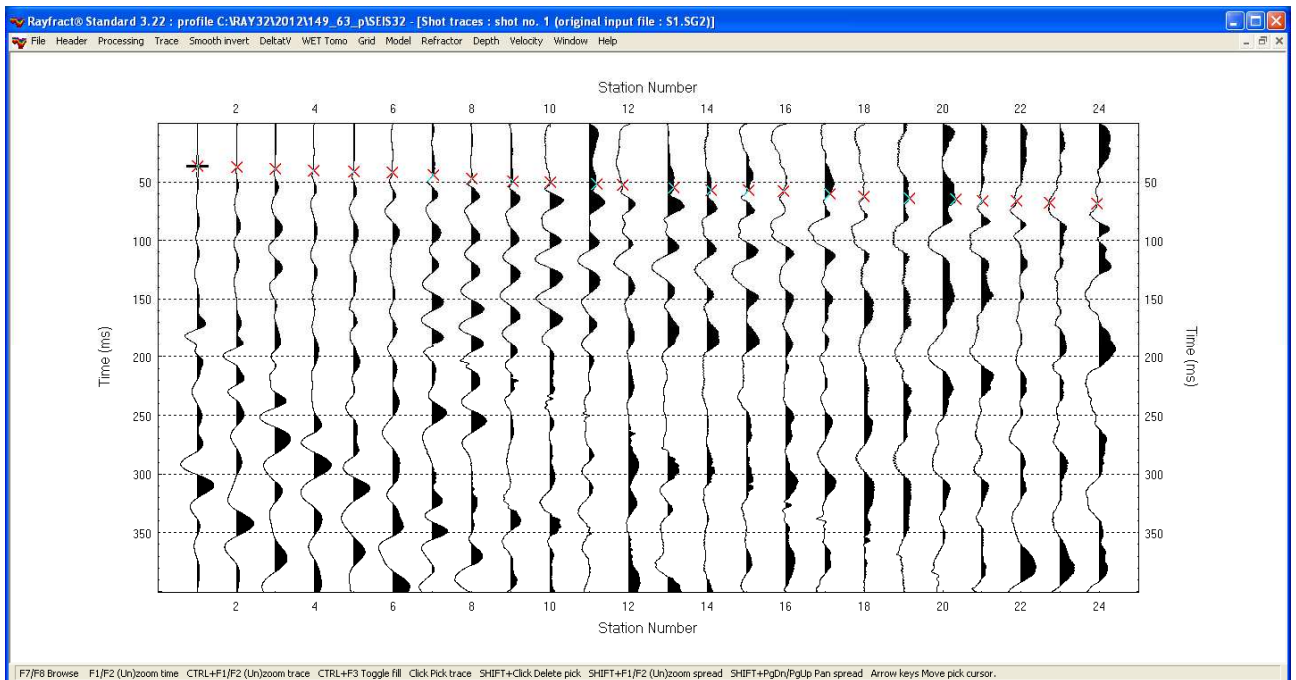


**Sez.49\_sr: shot 7**

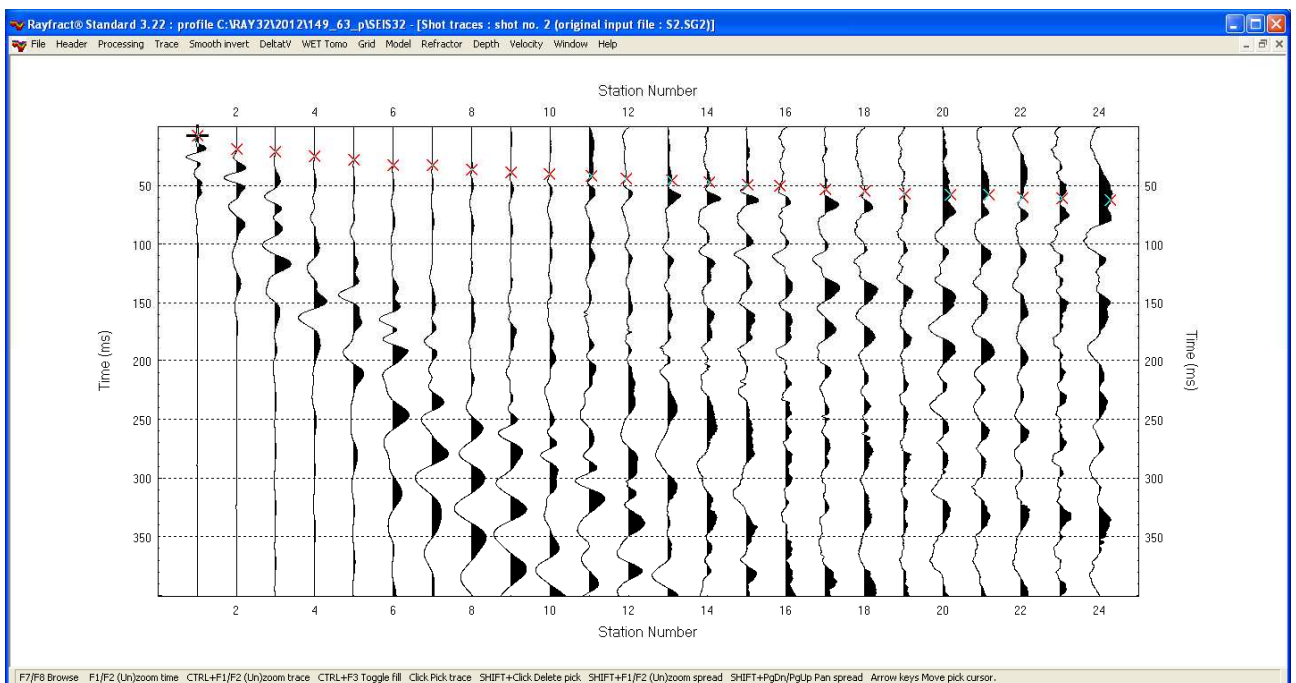


**Sez.49\_sr: dromocrone**

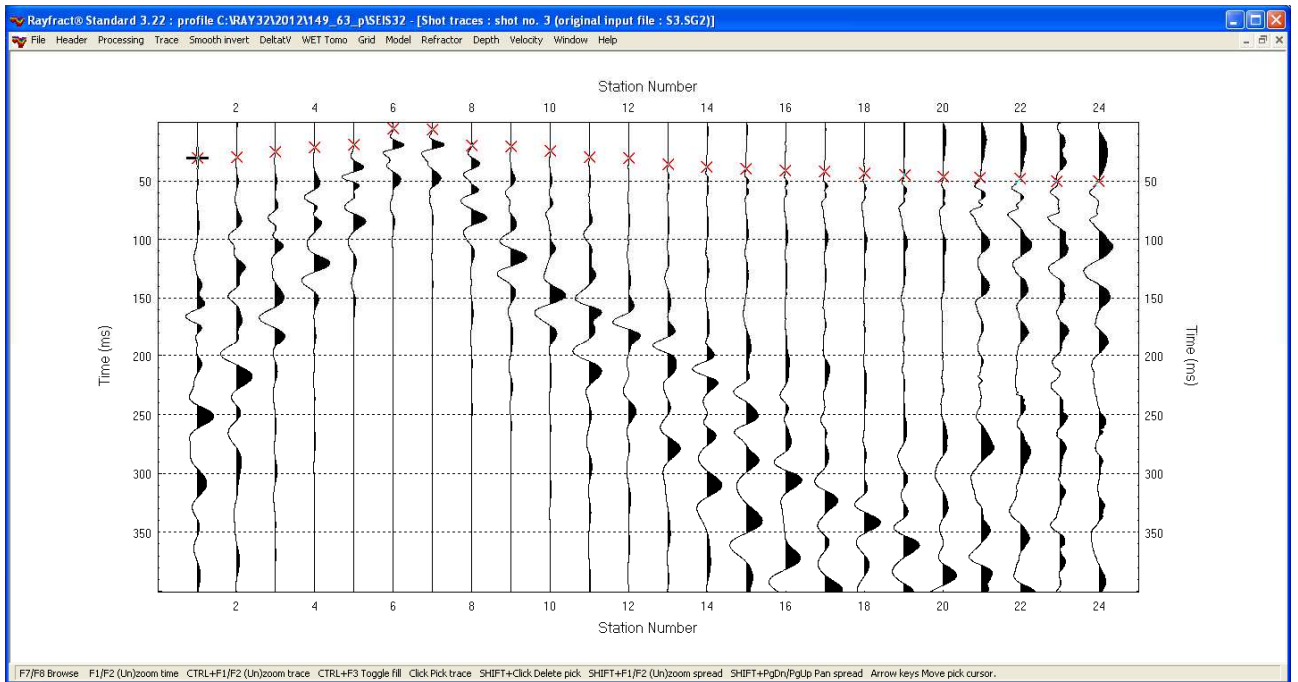
## Sismica a rifrazione in onde P - Sez.63\_sr Sismogrammi



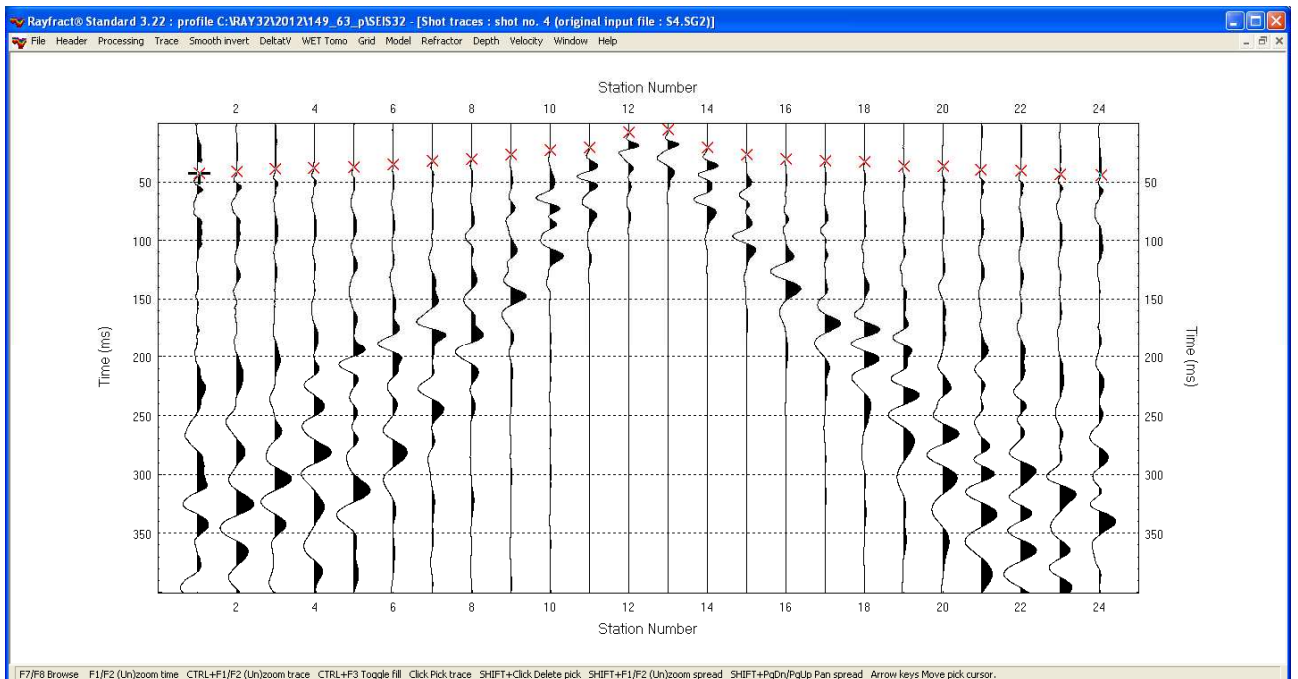
Sez.63\_sr: shot 1



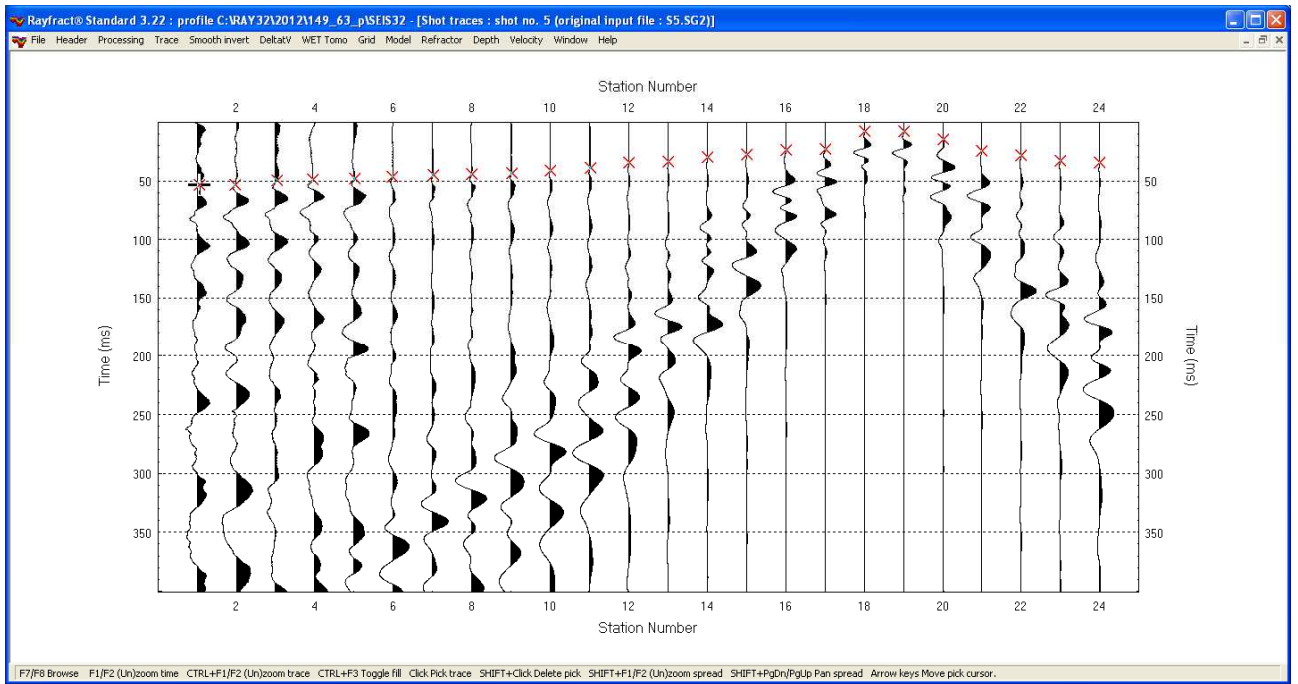
Sez.63\_sr: shot 2



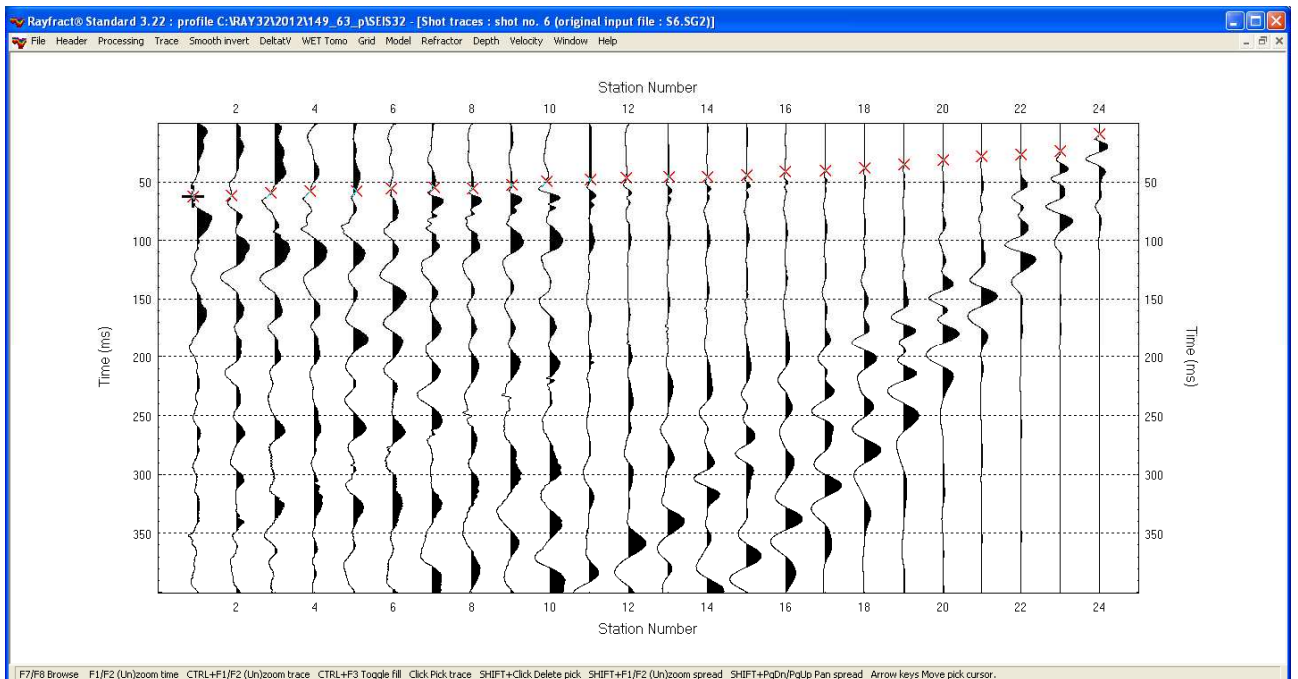
Sez.63\_sr: shot 3



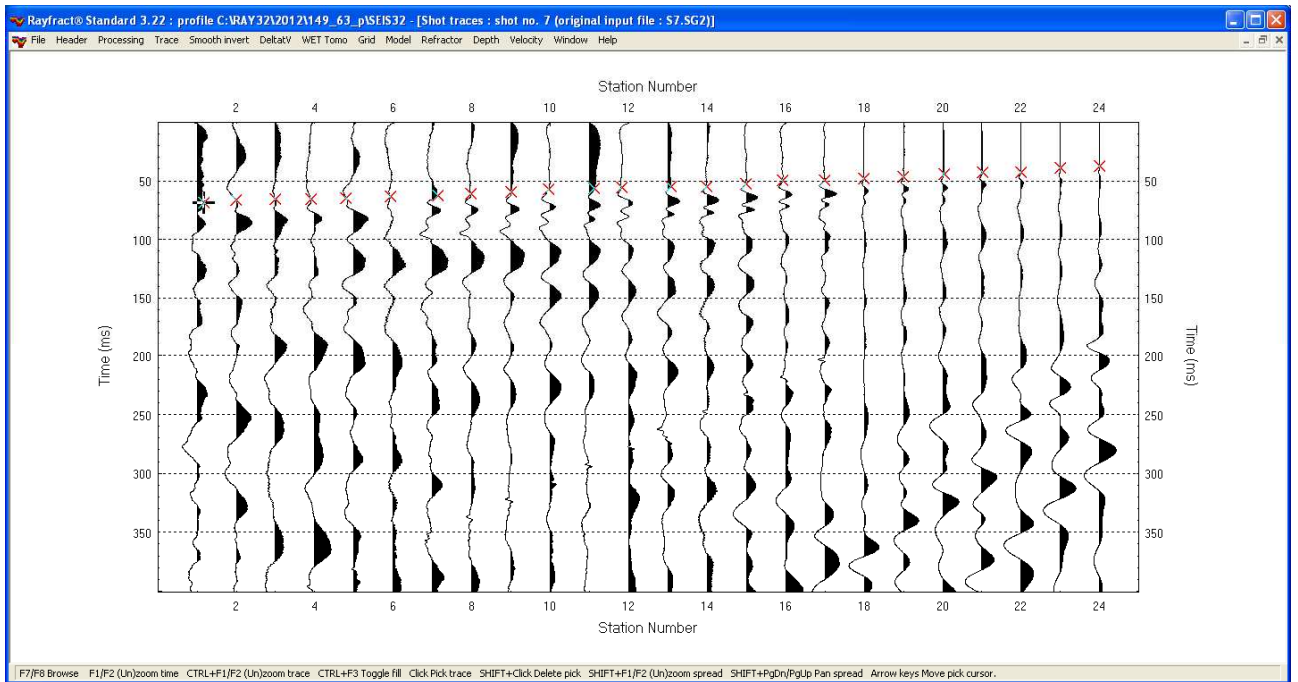
Sez.63\_sr: shot 4



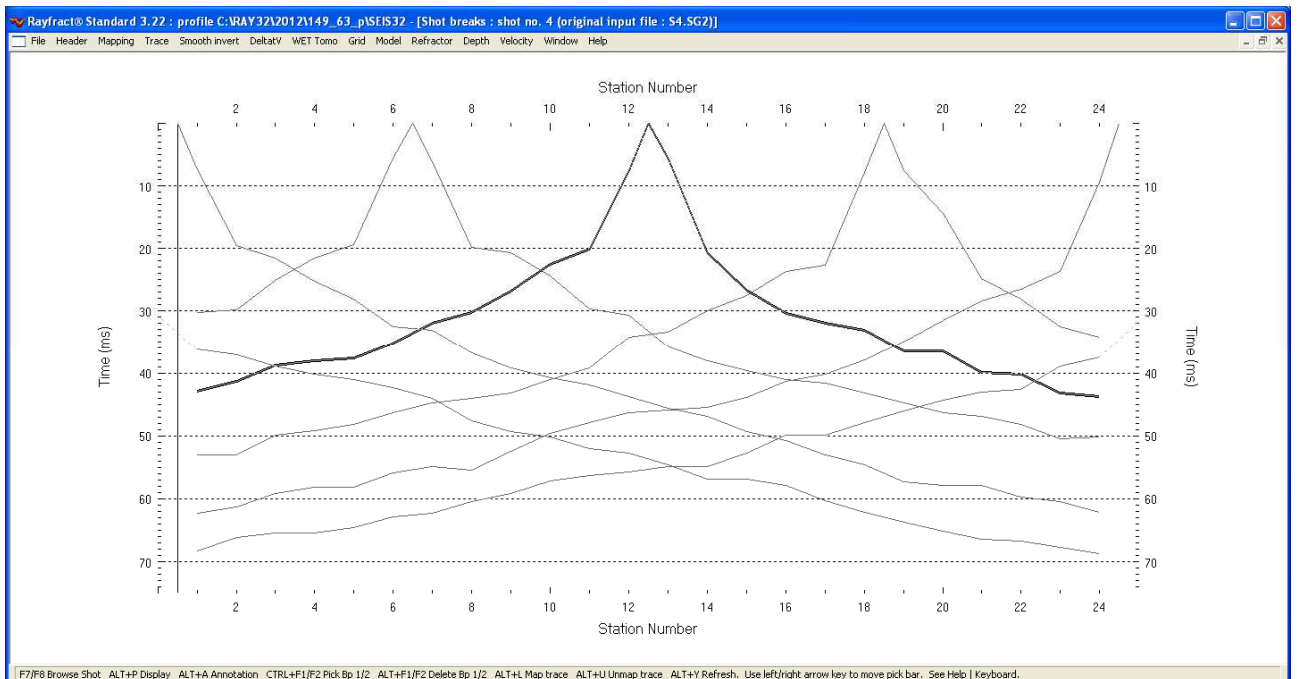
Sez.63\_sr: shot 5



Sez.63\_sr: shot 6

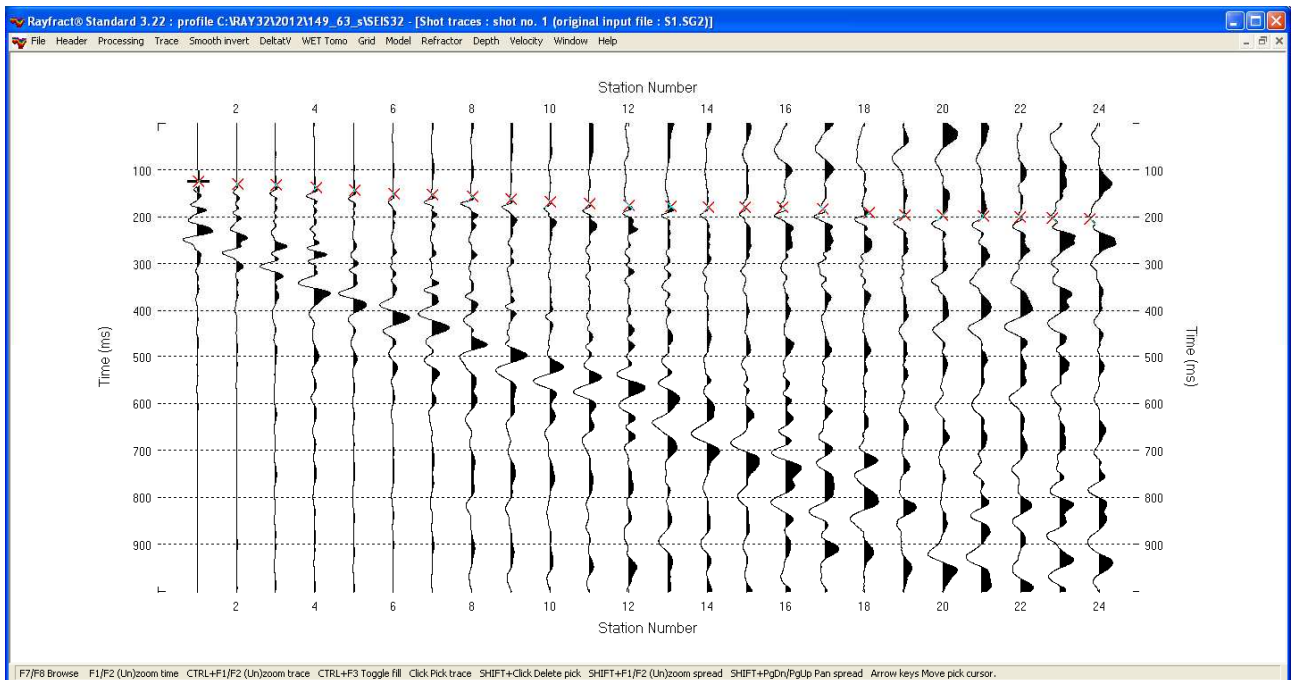


**Sez.63\_sr: shot 7**

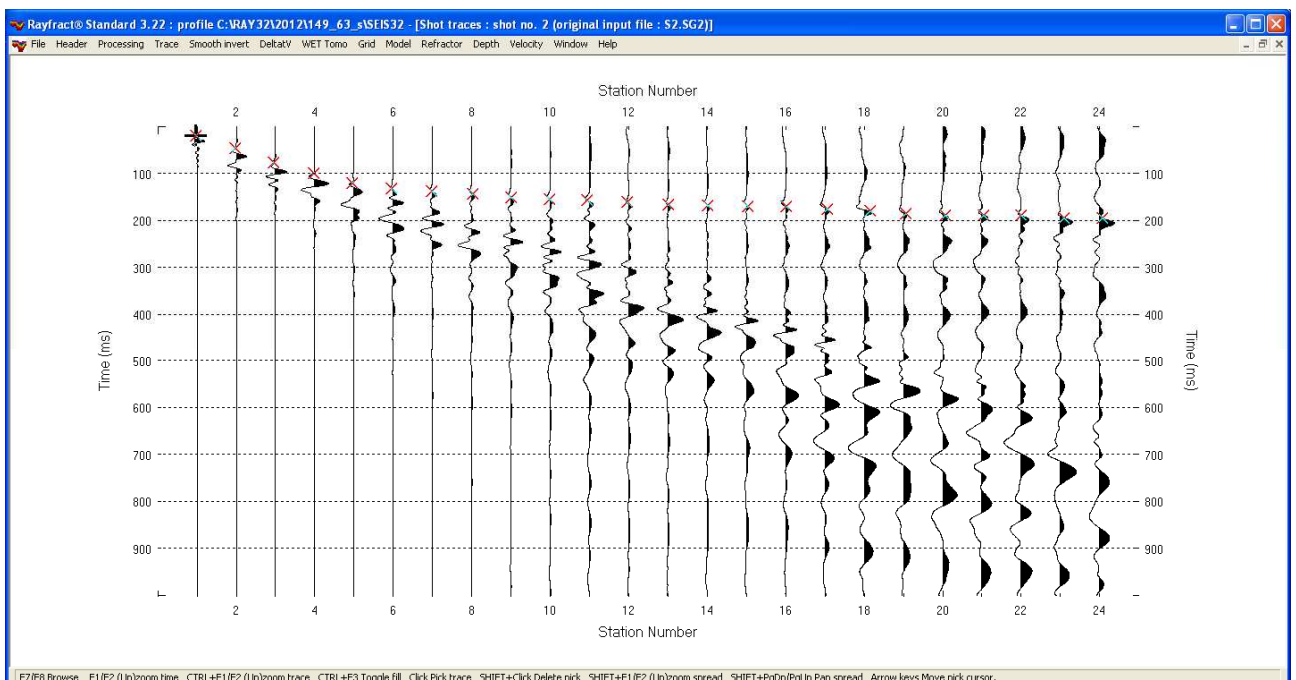


**Sez.63\_sr: dromocrone**

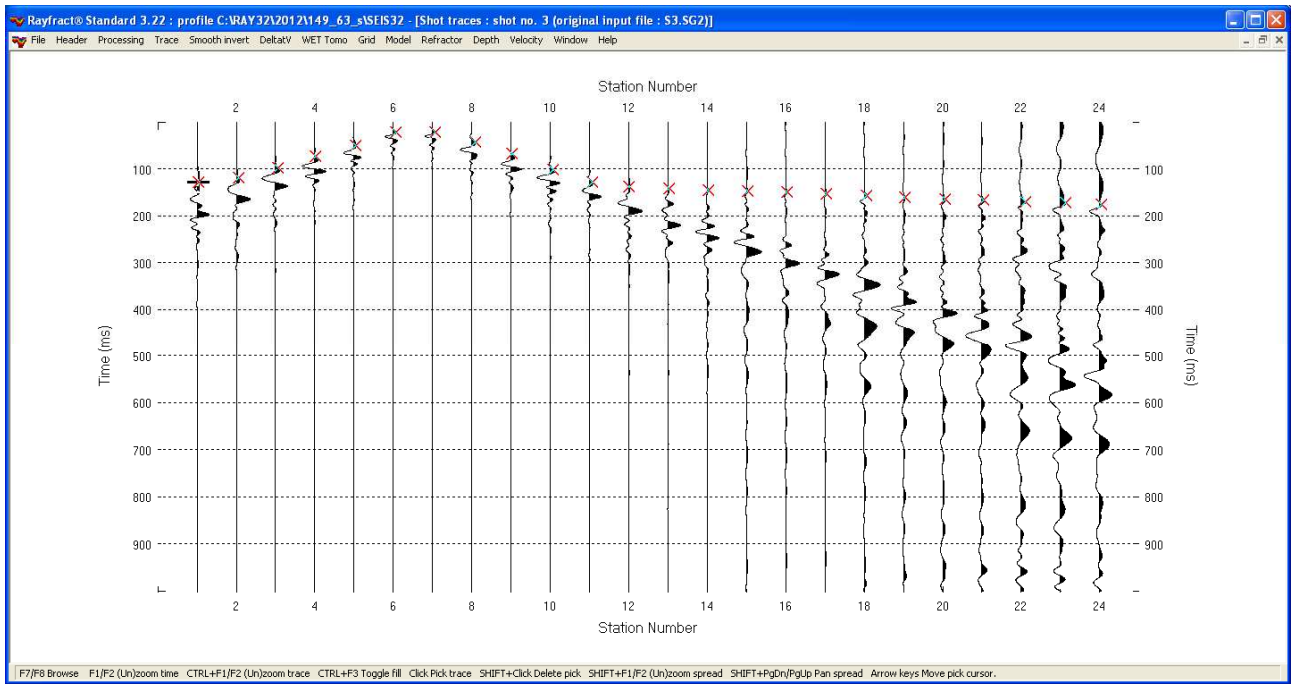
## Sismica a rifrazione in onde Sh - Sez.63\_sr Sismogrammi



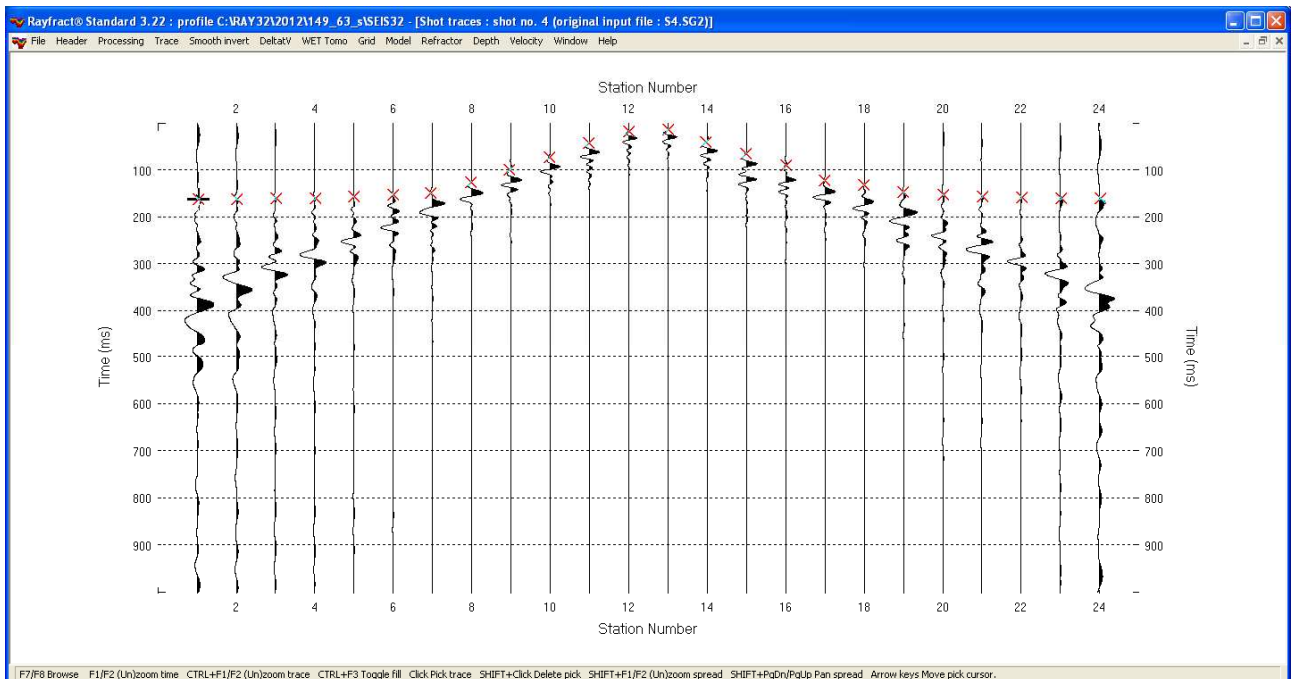
Sez.63\_sr: shot 1



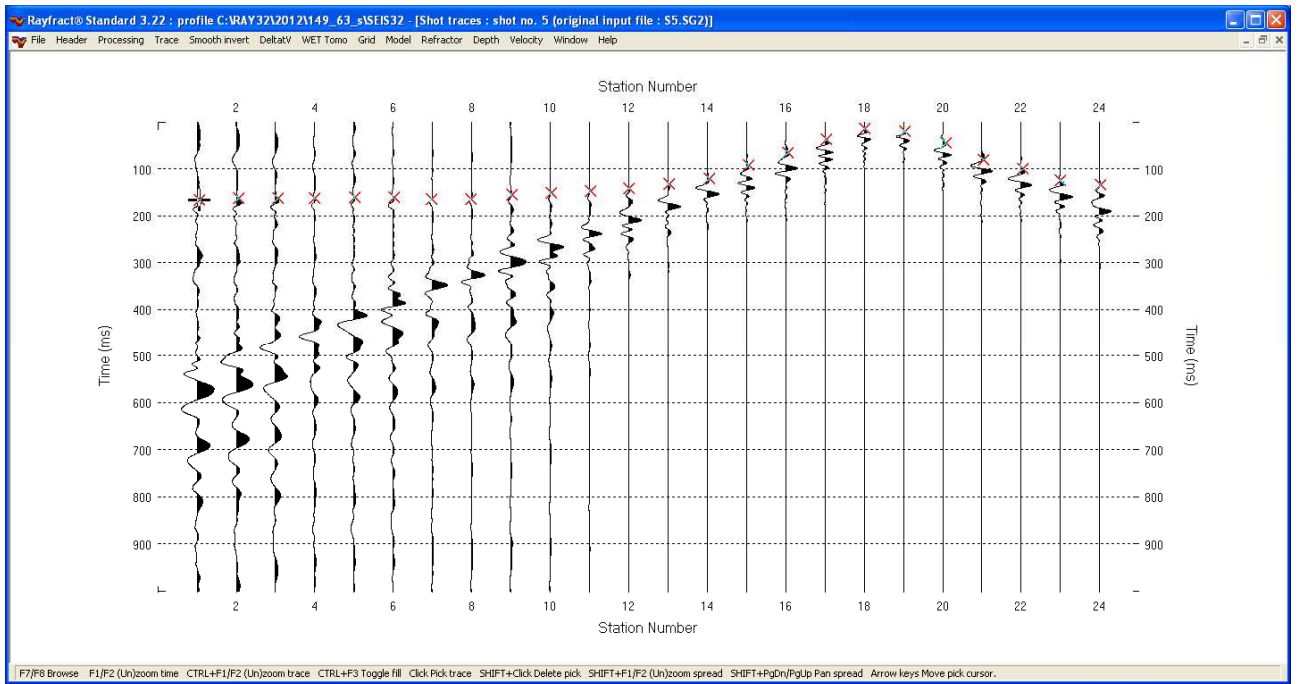
Sez.63\_sr: shot 2



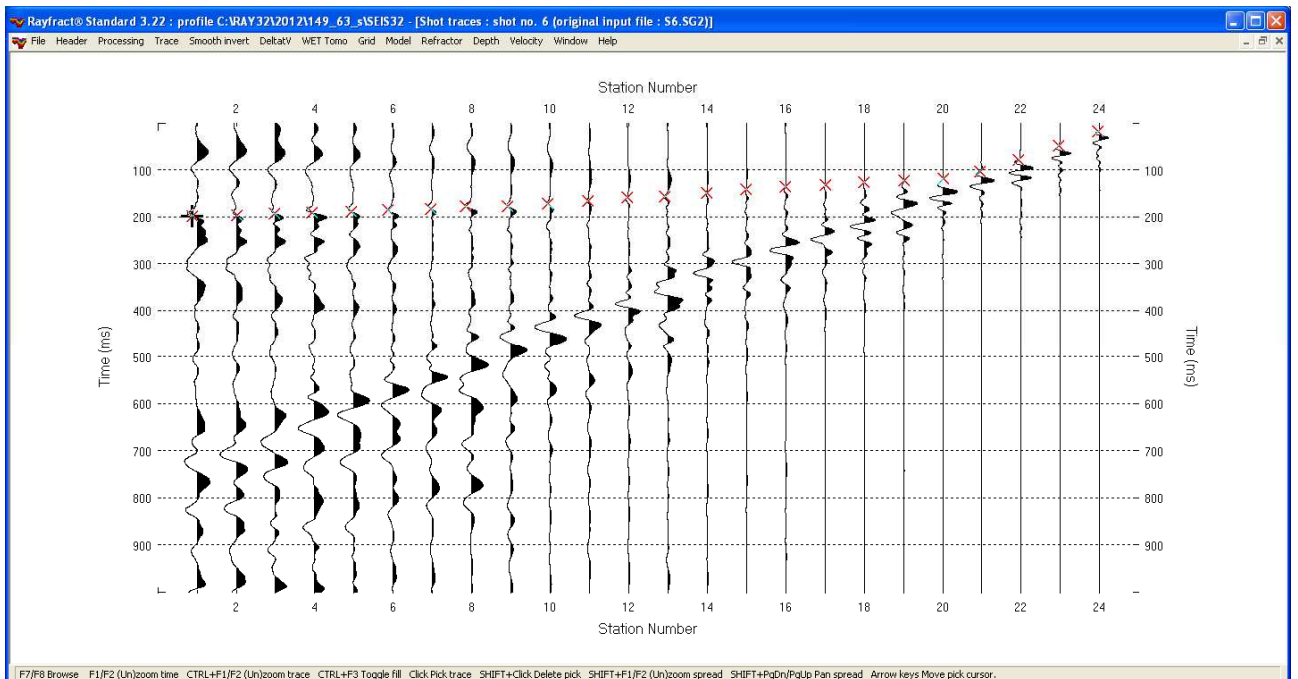
**Sez.63\_sr: shot 3**



**Sez.63\_sr: shot 4**

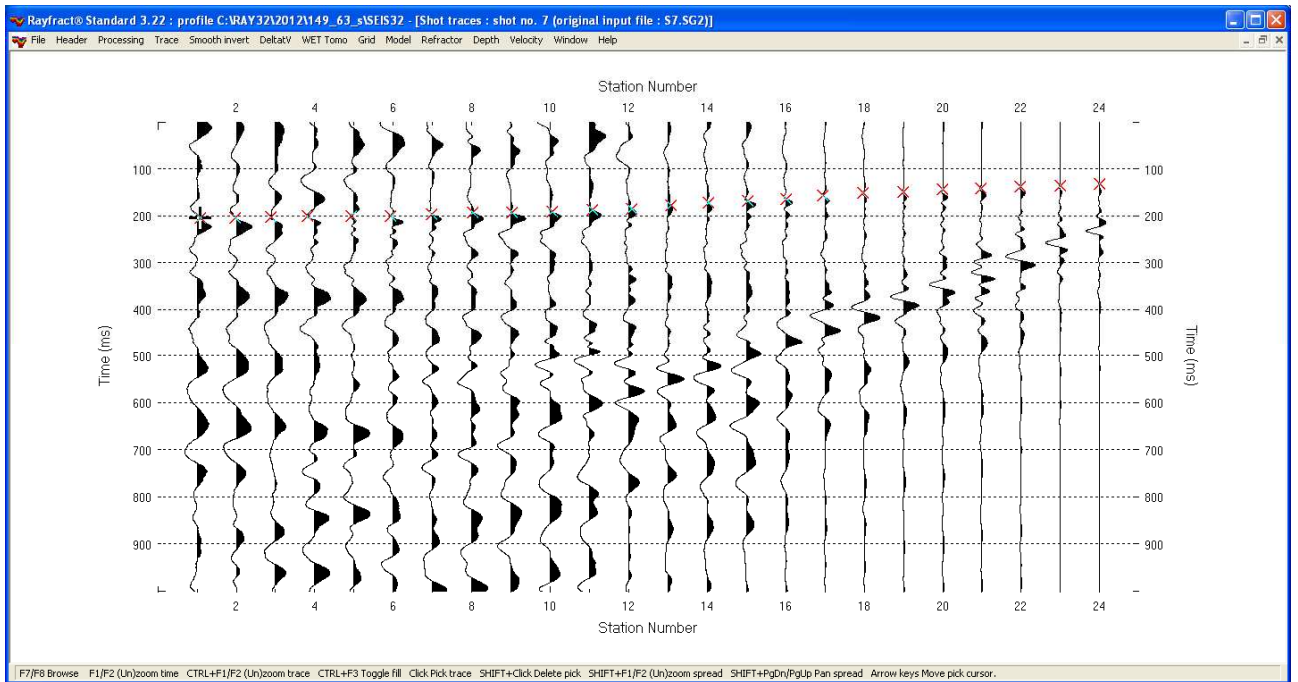


Sez.63\_sr: shot 5

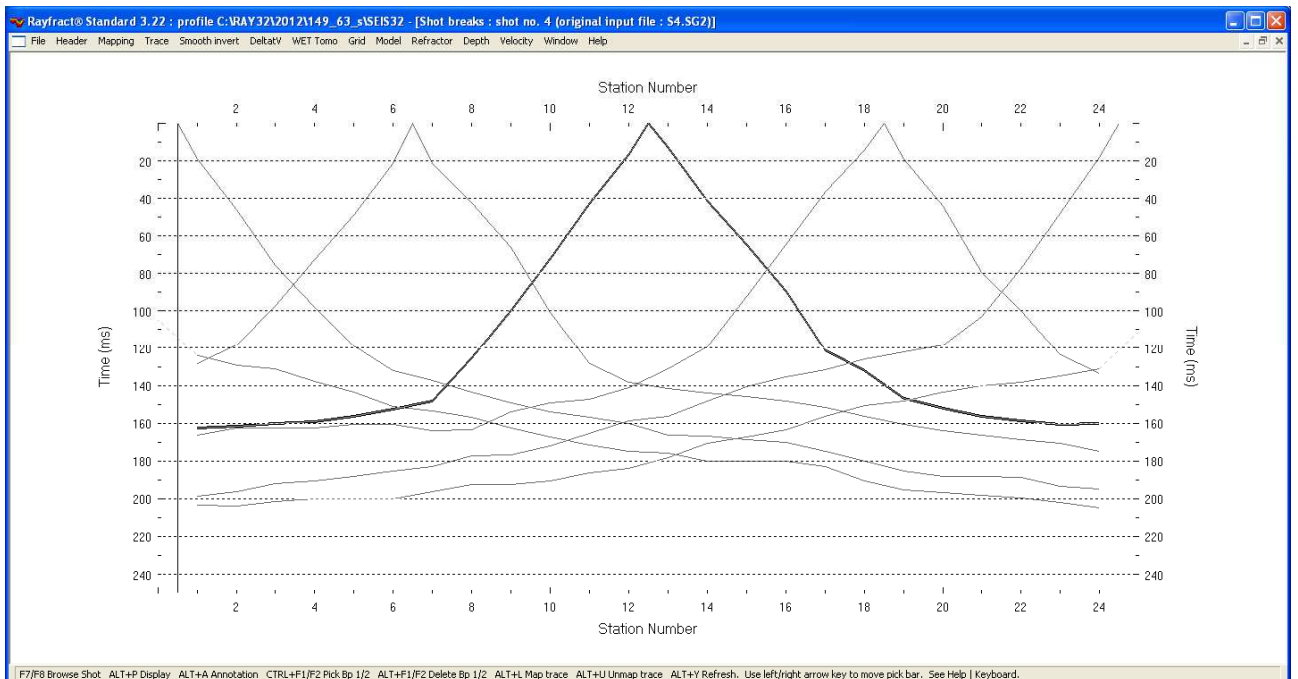


Sez.63\_sr: shot 6



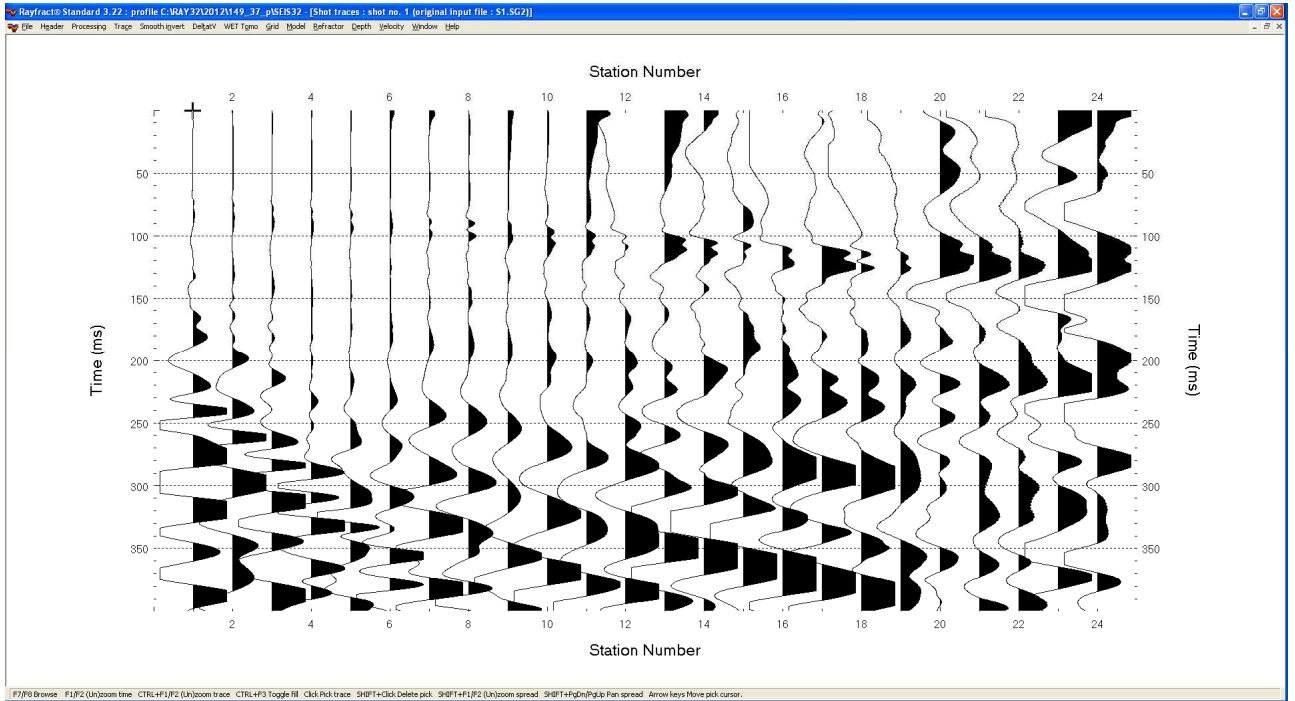


Sez.63\_sr: shot 7

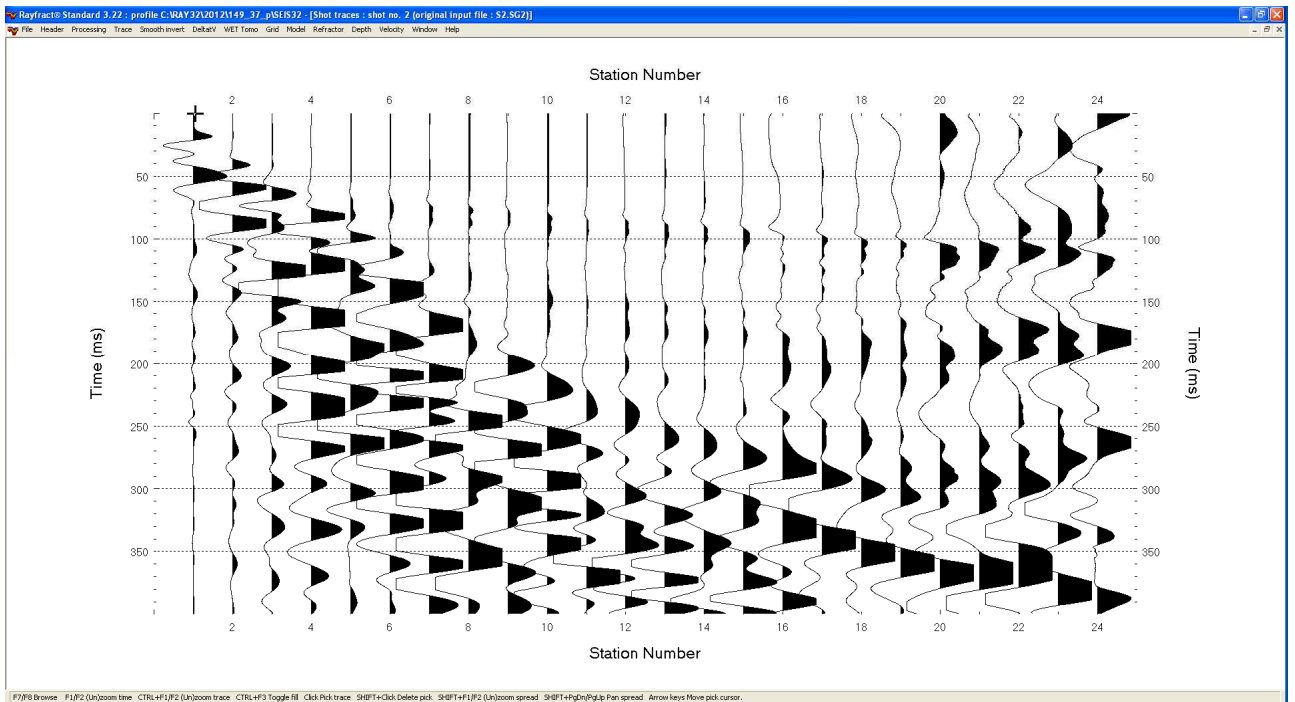


Sez.63\_sr: dromocrone

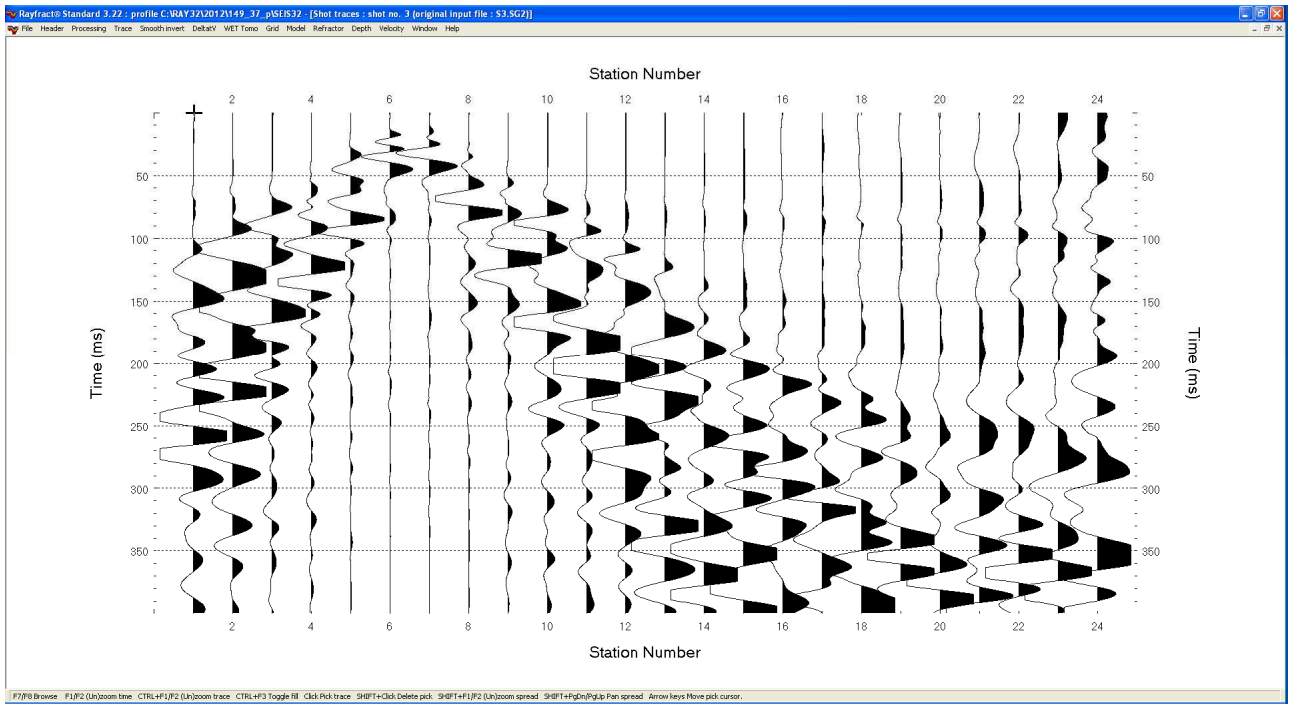
## Sismica a rifrazione in onde P - Sez.37\_sr Sismogrammi



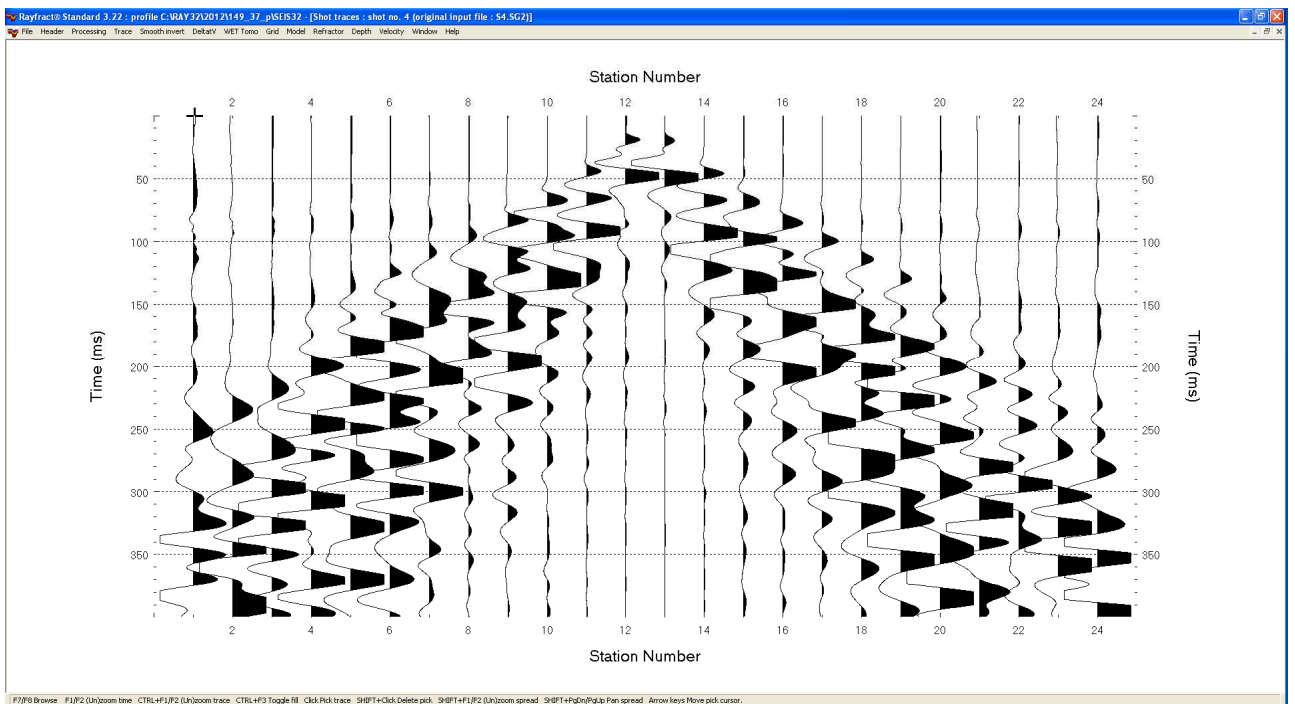
**Sez.37\_sr: shot 1**



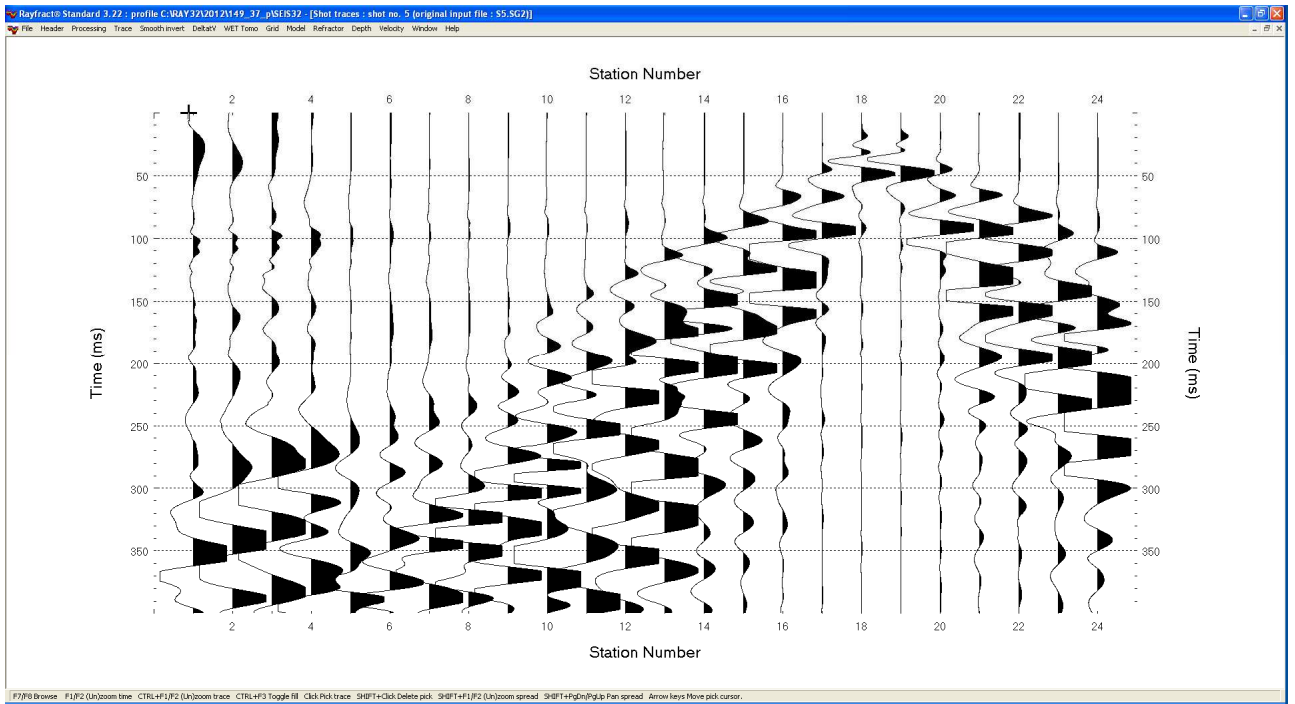
**Sez.37\_sr: shot 2**



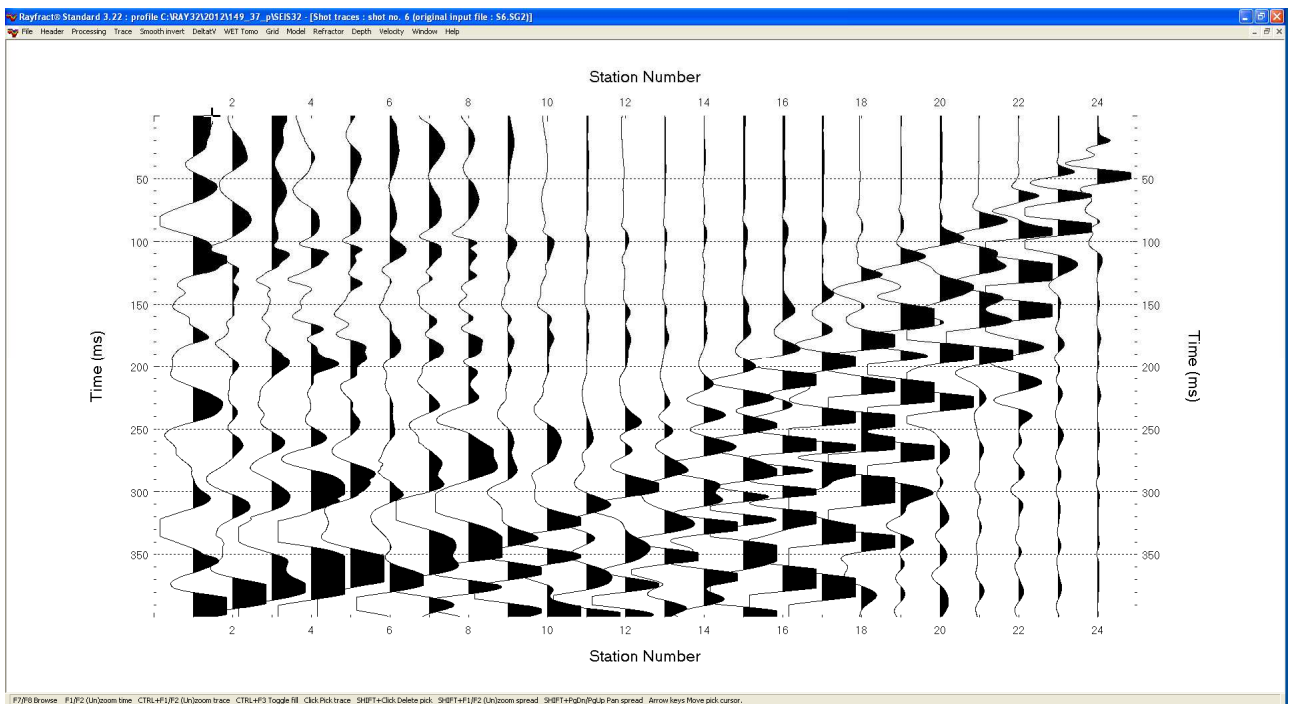
Sez.37\_sr: shot 3



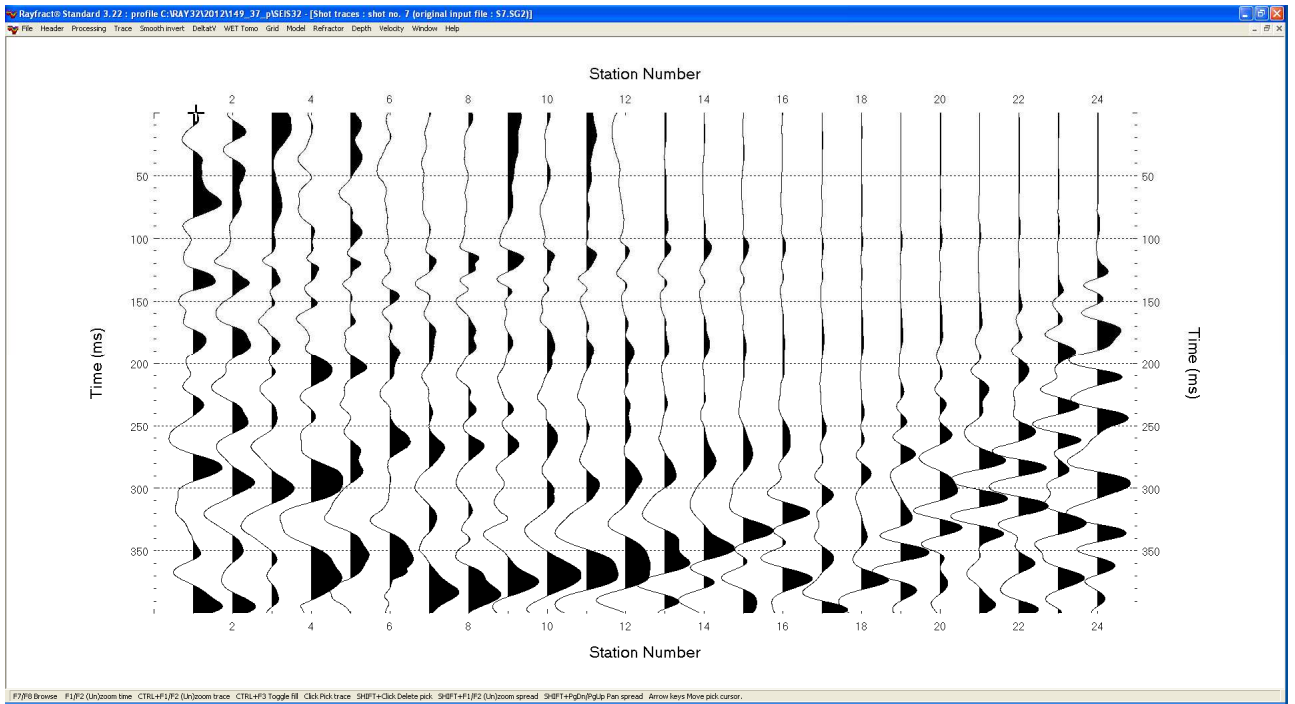
Sez.37\_sr: shot 4



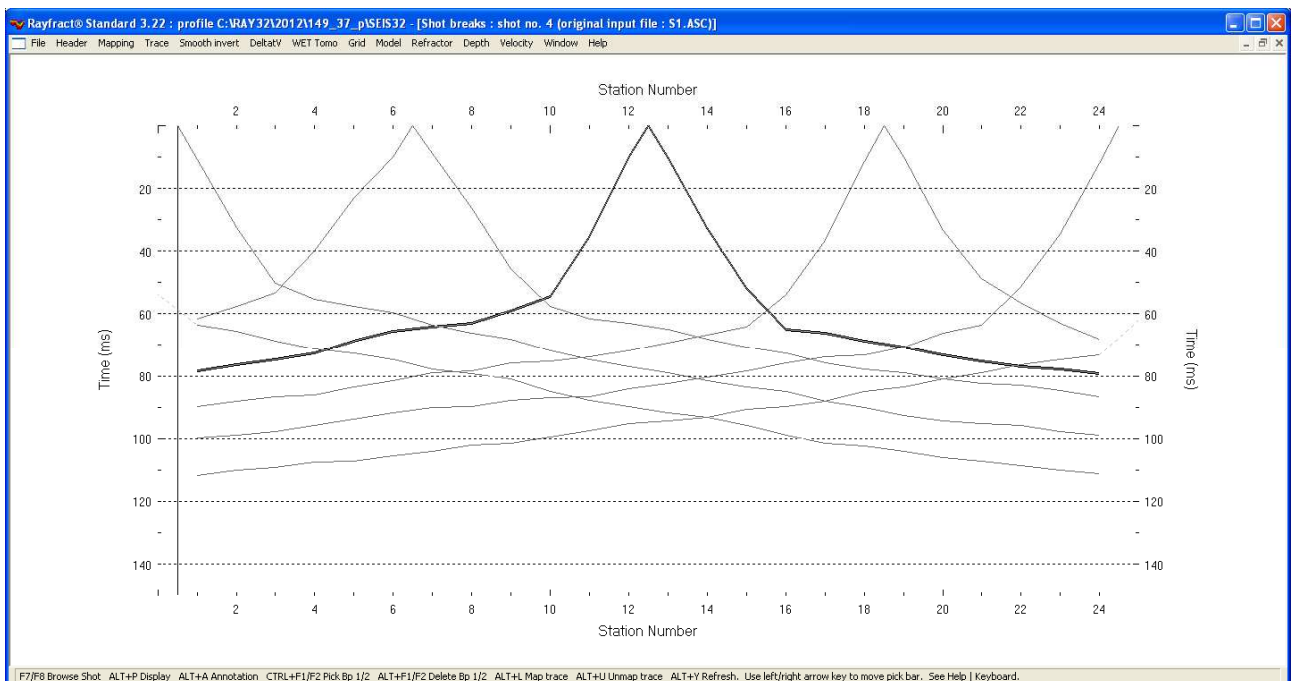
Sez.37\_sr: shot 5



Sez.37\_sr: shot 6

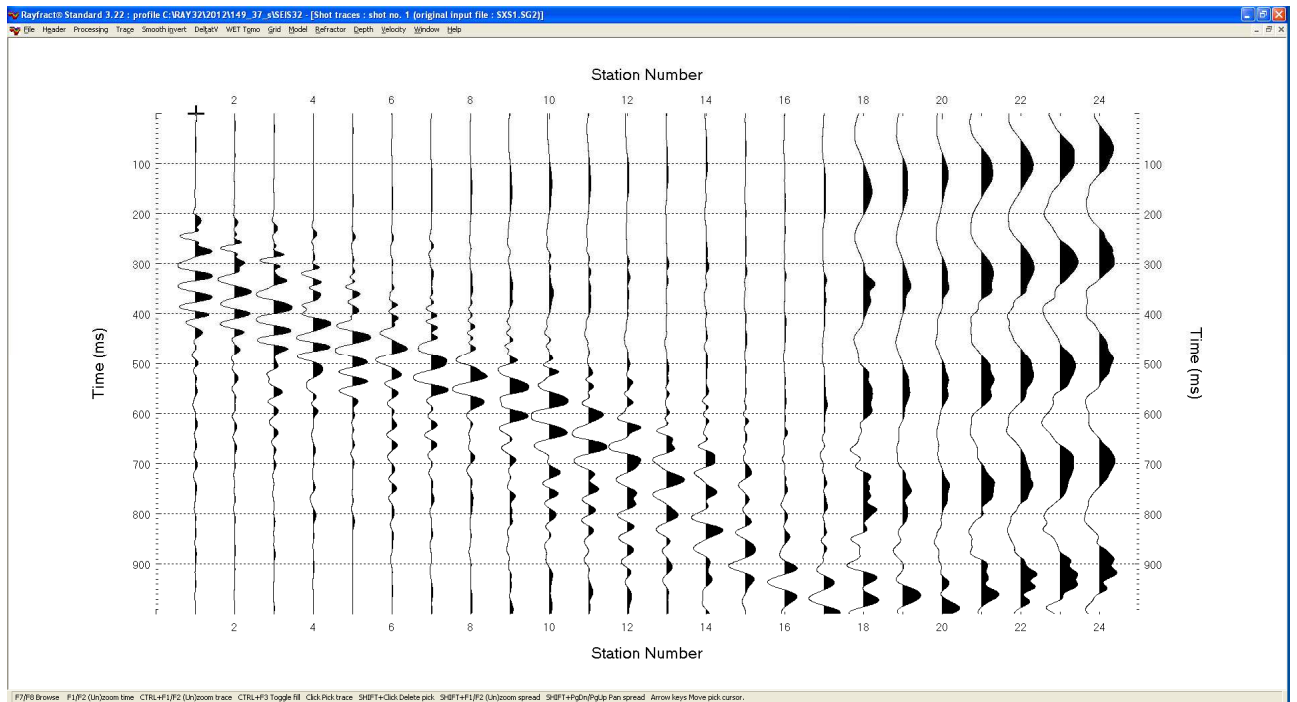


**Sez.37\_sr: shot 7**

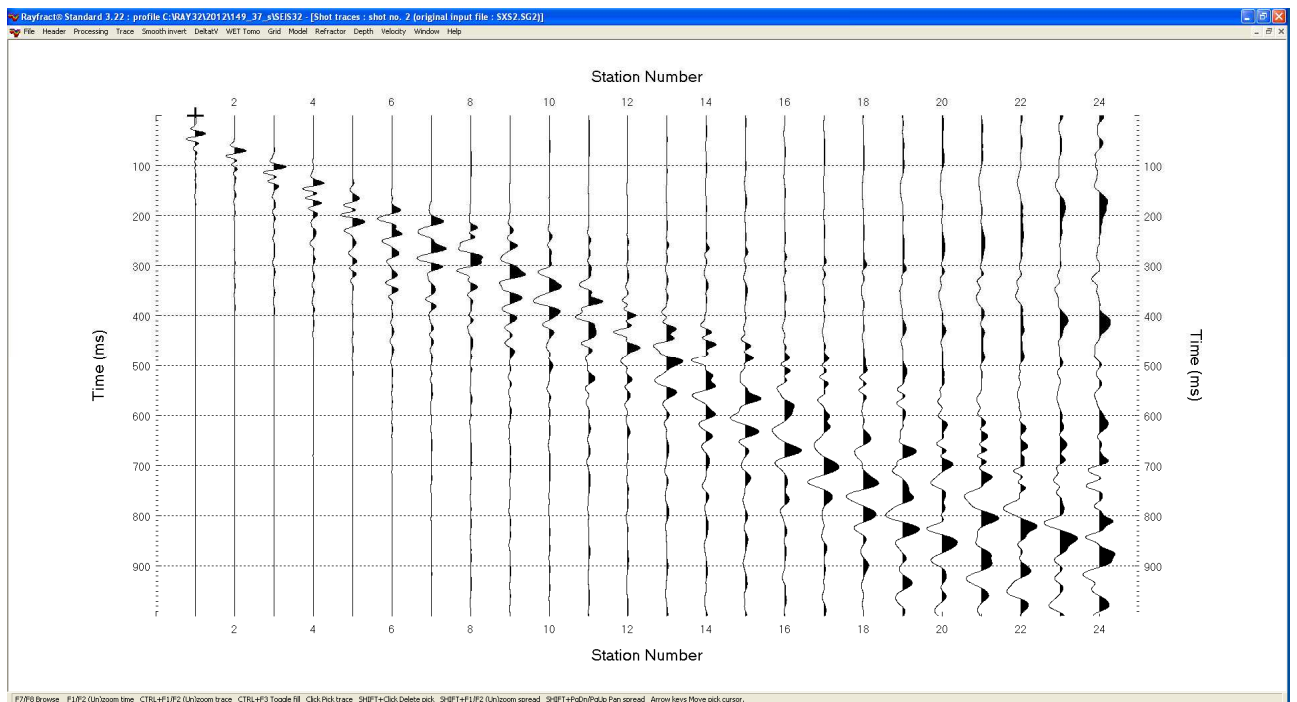


**Sez.37\_sr: dromocrone**

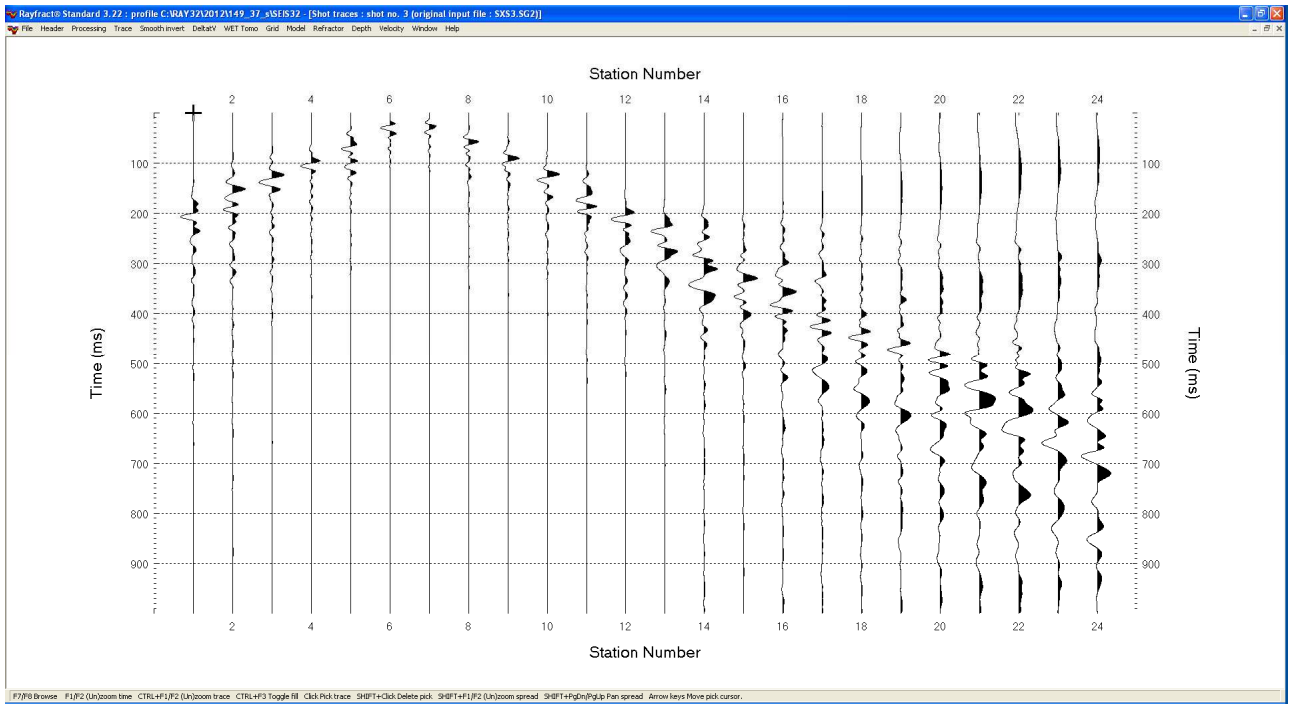
## Sismica a rifrazione in onde Sh - Sez.37\_sr Sismogrammi



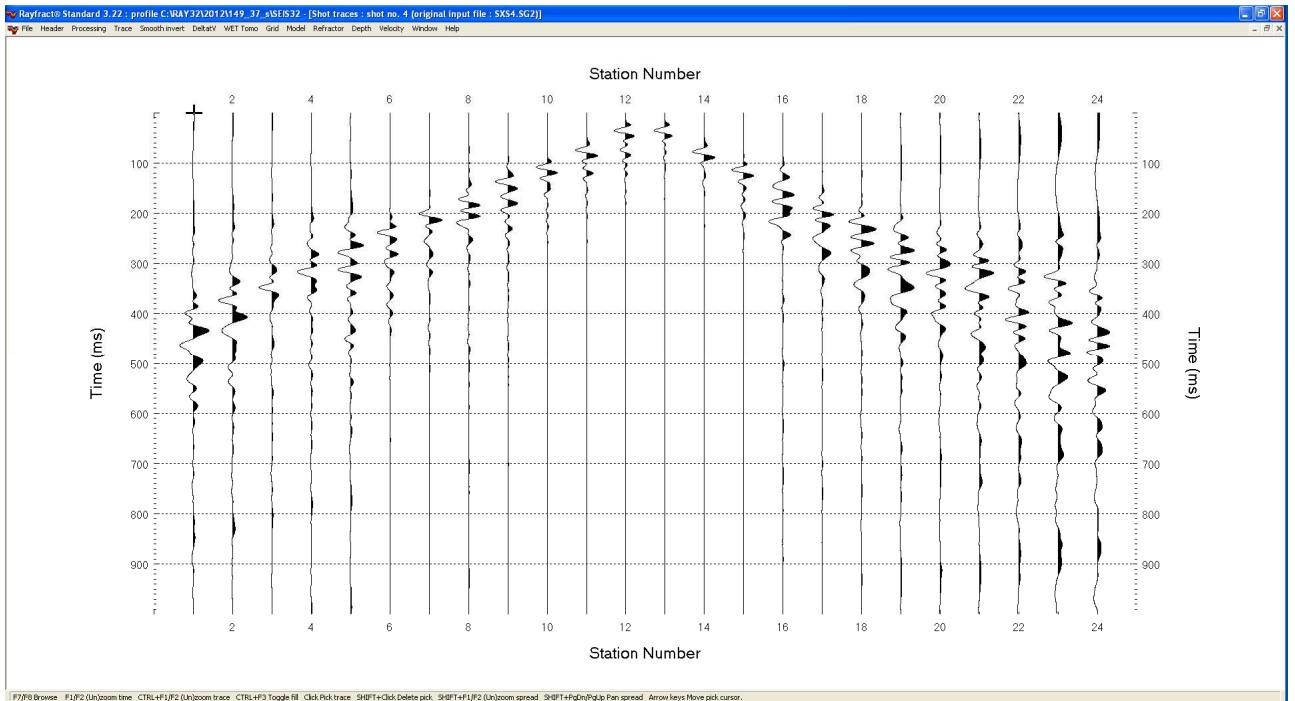
Sez.37\_sr: shot 1



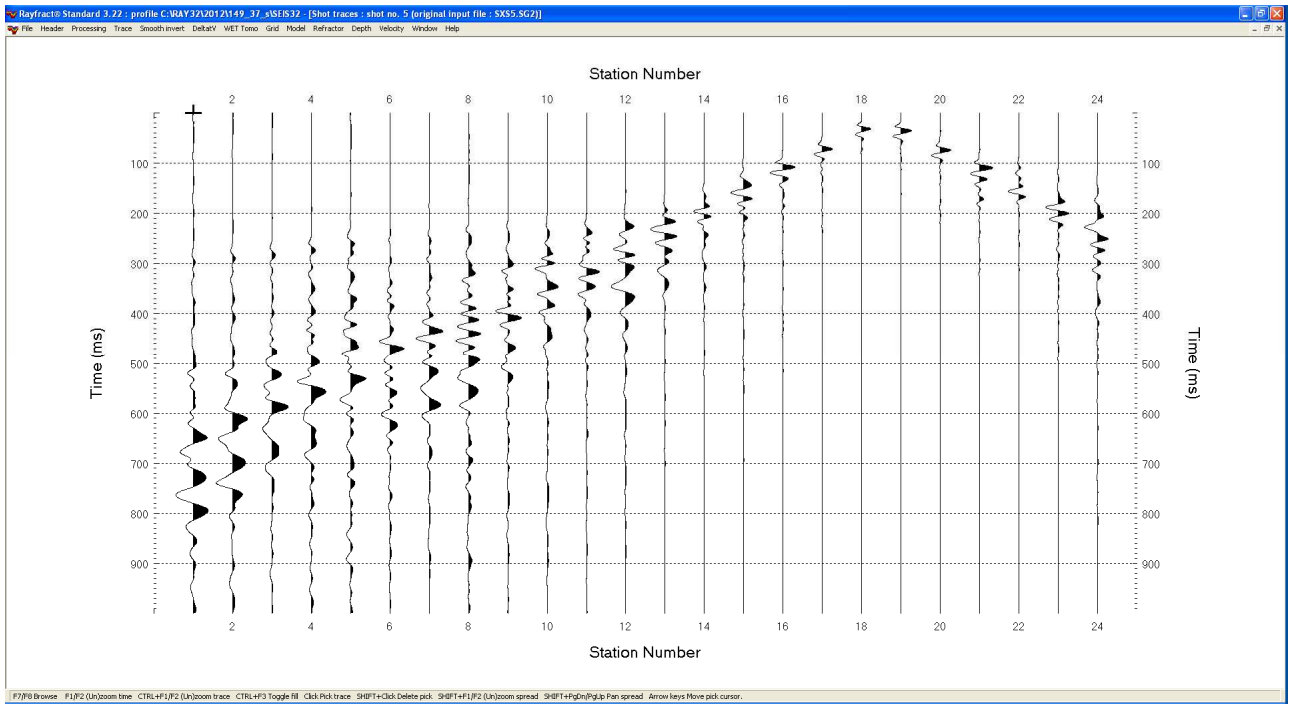
Sez.37\_sr: shot 2



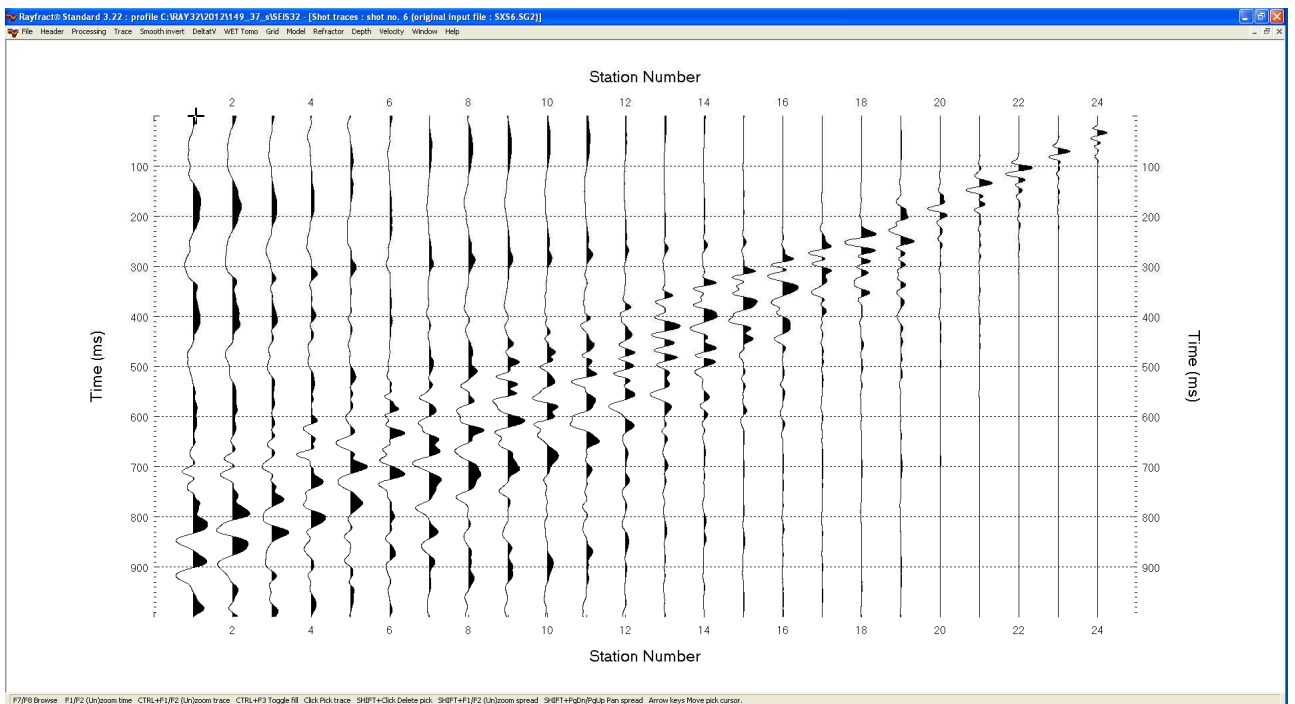
Sez.37\_sr: shot 3



Sez.37\_sr: shot 4

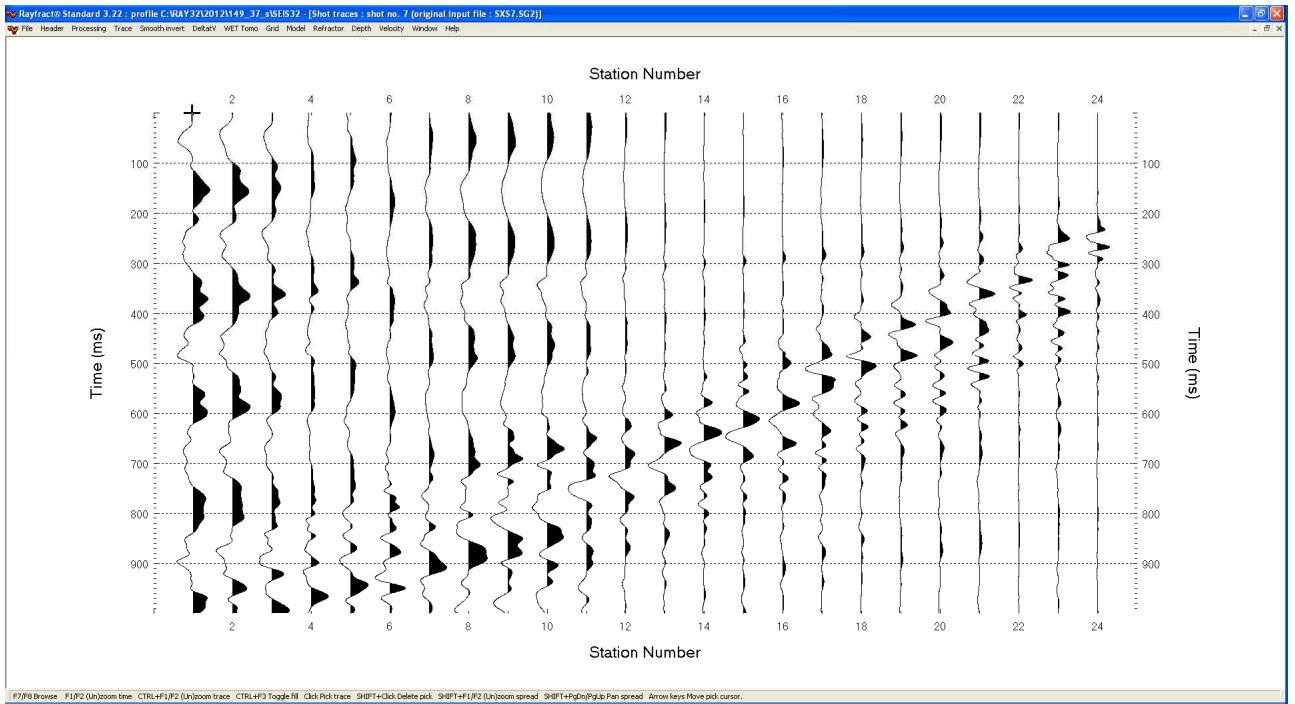


Sez.37\_sr: shot 5

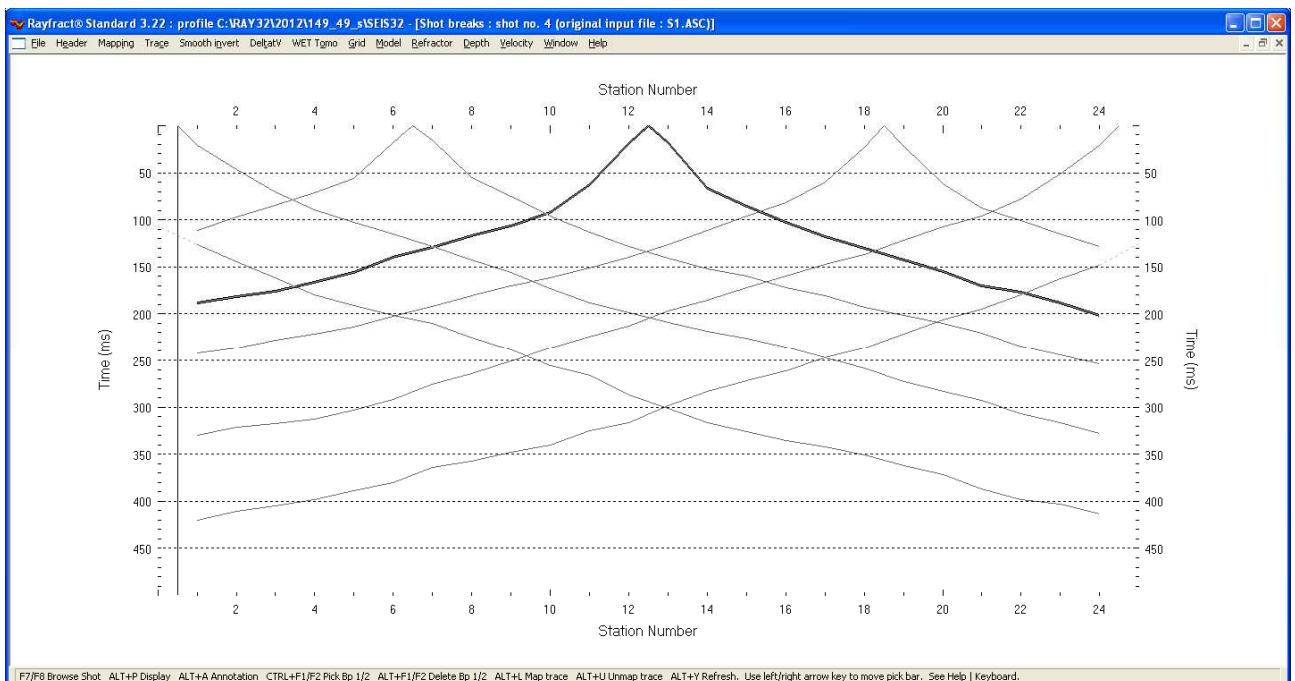


Sez.37\_sr: shot 6





**Sez.37\_sr: shot 7**



**Sez.37\_sr: dromocrone**